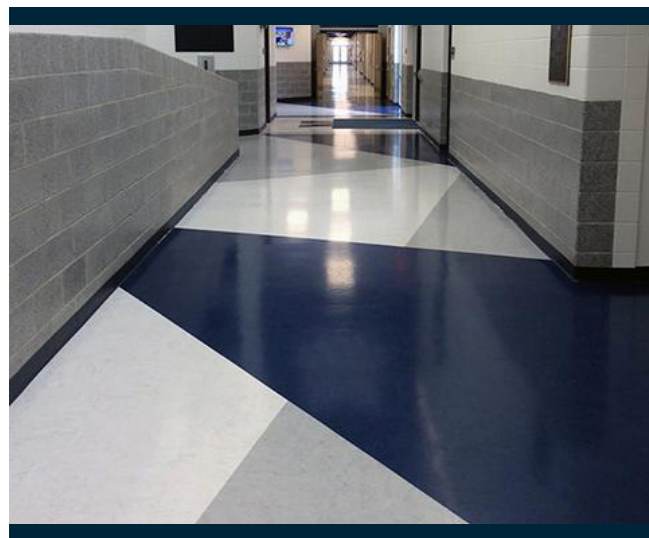


### Homogeneous Tile - HVT

#### Product Characteristics

Standard Spec	ASTM 1066
Classification	Class II
Nominal Dimensions	17.7" x 17.7" (450mm x 450mm)
Overall Thickness	3.0mm (0.120")
Wear Layer Thickness	120 mils
Packaging	30.5 SF per Carton (14 pcs)
Recycled Contents	
Pre-Consumer	>50%
Post-Consumer	0-2%
MR Credit 4.1	26% (Sum of Post-Consumer + 1/2 Pre-Consumer)
Warranty	FasolPlus is covered by a limited 10-year warranty. Visit our website, <a href="http://www.toli-na.com">www.toli-na.com</a> , for complete details.



#### Test Performance

	Characteristic	Test Method	Requirement	Performance
ASTM F1066	Thickness	ASTM F386	± 0.005", as specified	Passes.
	Size	ASTM F2055	± 0.016" per linear foot	Passes. (TOLI's internal tolerance of ±0.008"/LF is 2X tighter than requirement)
	Squareness	ASTM F2055	0.010" max	Passes.
	Resistance to Heat	ASTM F1514	ΔE ≤ 8.0	Passes. (ΔE ≤ 1.0 as tested)
	Chemical Resistance	ASTM F925	No more than slight change in surface dulling, surface attack, or staining.	Passes.
	Deflection	ASTM F1304	1.0" minimum	Passes. (≥ 2.0" as tested)
	Dimensional Stability	ASTM F2199	0.024" per linear foot, maximum	Passes.
	Impact	ASTM F1265	No cracks beyond limit	Passes.
	Indentation-one minute	ASTM F1914	0.006"-0.015"	Passes. (0.006"-0.008" as tested)
	Indentation-ten minutes	ASTM F1914	0.0100"-0.0209" (based on one minute result)	Passes. (0.010"-0.013" as tested)
	Indentation-at 115°F	ASTM F1914	< 0.032"	Passes. (0.022"-0.026" as tested)
Additional Tests	Static Load Limit	ASTM F970 (Modified)	≤ 0.005"	> 1,000 PSI. (0.002" as tested)
	Static Coefficient of Friction	ASTM D2047	≥ 0.5	ADA Compliant
	Wear Layer Thickness	ASTM F410	No requirement	0.120" (120 mils)
	Critical Radiant Flux	ASTM E648	0.45 W/cm <sup>2</sup> or more-Class I	Class I (> 0.45 W/cm <sup>2</sup> )
	Smoke Generation	ASTM E662	450 or less	<450 (Flaming and Non-flaming)
	Resistance to Light	ASTM F1515	ΔE ≤ 8.0	Passes. (ΔE ≤ 2.0 as tested)
	VOC Emissions	CA 01350	TVOC ≤ 0.5 mg/m <sup>3</sup>	Passes. FloorScore Certified FS-03026

## Product Information and Technical Data

### Homogeneous Tile - HVT



2007 Cotton



2061 Pebble



2010 Flax



2072 Boulder



2074 Mineral



2038 Silver



2062 Taupe



2042 Latte



2041 Gunmetal



2073 Cove



2006 Blueberry



2034 Sky



2037 Orchid



2023 Caramel



2031 Spring



2035 Twilight



2040 Ebony



2063 Java



2077 Thicket



2032 Leaf



2029 Sunflower



2025 Pumpkin



2002 Sangria



2076 Koi