

Takiron® Nattice and Pathways

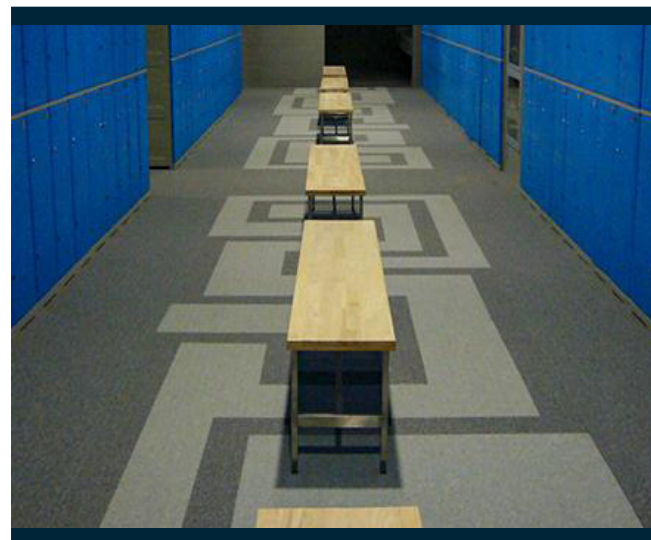


Product Information and Technical Data

Interior / Exterior Commercial Sheet (w/ coordinating treads)

Product Characteristics

Standard Spec	ASTM 1303
Classification	Type II Grade 1
Backing Class	Class B
Nominal Dimensions	6' Wide x 66' Long (1820mm x 20m)
Roll Size	44 Square Yards
Overall Thickness	2.5mm (0.100")
Recycled Contents	
Pre-Consumer	12.0%
Post-Consumer	8.0%
MR Credit 4.1	14.0% (Sum of Post-Consumer + 1/2 Pre-Consumer)
Warranty	Nattice and Pathways are covered by a limited 5-year warranty. Visit our website, www.toli-na.com , for complete details.



Test Performance

	Characteristic	Test Method	Requirement	Performance
ASTM F1303	Thickness	ASTM F386	≥ 0.040"	Passes. (2.5mm/0.100" as tested)
	Wear Layer Thickness - Grade 1 (Commercial)	ASTM F410	≥ 0.050"	Passes.
	Wear Layer Composition - Type II	Certificate of Compliance	≥ 34% binder	Passes.
	Indentation	ASTM F1914	≤ 0.007"	Passes. (0.003" as tested)
	Flexibility	ASTM F137	1/4 mandrel, no cracks or breaks	Passes.
	Chemical Resistance	ASTM F925	No more than slight change in surface dulling, surface attack, or staining.	Passes.
	Resistance to Heat	ASTM F1514	ΔE ≤ 8.0	Passes. (ΔE ≤ 1.0 as tested)
	Resistance to Light	ASTM F1515	ΔE ≤ 8.0	Passes. (ΔE ≤ 1.0 as tested)
	Static Load Limit (@175psi)	ASTM F970	≤ 0.005"	Passes. (0.000" as tested)
	Static Load Limit (Modified)	ASTM F970	≤ 0.005"	250 psi. (0.001" as tested) 750 psi (0.003" as tested)
Additional Tests	Static Coefficient of Friction	ASTM D2047	≥ 0.5	≥ 0.8 ADA Compliant (wet and dry)
	Critical Radiant Flux	ASTM E648	0.45 W/cm ² or more-Class I	Class I (> 0.45 W/cm ²)
	Smoke Generation	ASTM E662	450 or less	<450 (Flaming and Non-flaming)
	VOC Emissions	CA 01350	TVOC ≤ 0.5 mg/m ³	Passes. FloorScore Certified FS-03268

Takiron® Nattice® and Pathways



Product Information and Technical Data

Interior / Exterior Commercial Sheet (w/ coordinating treads)



PTH 82 Taupe



PTH 91 Grey



PTH 92 Charcoal



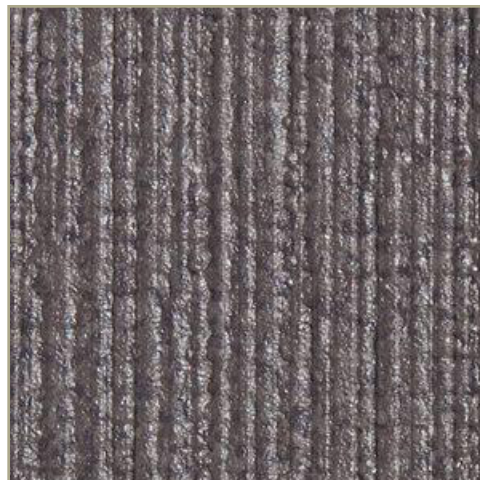
NAT 833 Autumn Fog



NAT 837 Mudslide




NAT 936 Chromed Cloud



NAT 937 Storm

TOLI-North America
Phone: (910) 999-TOLI (8654)
Website: www.toli-na.com
E-Mail: info@toli-na.com
07-25

C.I. Takiron Corporation is ISO 9001 and ISO 14001 certified.
TOLI® and the TOLI logo are trademarks of TOLI Corporation.
C.I. TAKIRON® and  are trademarks of C.I. Takiron Corporation.
Nattice® is a trademark of CBCA.