



EXCHROME

TOLI DESIGN TILE CARPET



TOLI DESIGN TILE CARPET EXCHROME

EXCHROME is a printed carpet tile that expands free thinking and material texture.

With rich colors and original designs, EXCHROME brings performance and personalization to multiple commercial environments.

Table of contents

p.2	RANDOM 5
p.3	Easy Order System SCALE UP 4
p.4	EXC-5000
p.26	EXC-2000
p.62	EXC-1000
p.66	Full Order System
p.67	Job References
p.68	Function Introduction
p.69	Underlay Sheet for Carpet Tile
p.70	Specification List



Rich design variations and selectable material textures

With over 120 standard items, plus simple customization (including "Scale up 4" designs and custom colors), EXCHROME offers unlimited design potential across three base constructions.

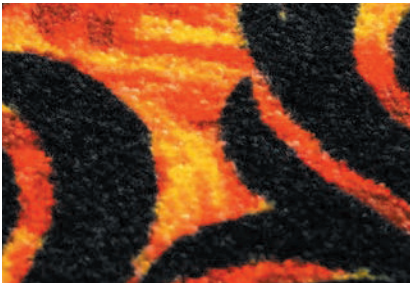
EXC-5000 Cut & Loop ▶ p.4

The combination of glossy yarn and rich-textured cut & loop creates a luxurious and sophisticated atmosphere.



EXC-2000 Cut Pile ▶ p.26

Cut pile, capable of expressing a variety of colors and delicate patterns, fascinates with its vivid colors and bold designs.



EXC-1000 Textured Loop ▶ p.62

Textured loop construction incorporating solution dyed yarn with EXCHROME over print. It is also characterized by its ability to hide dirt well.

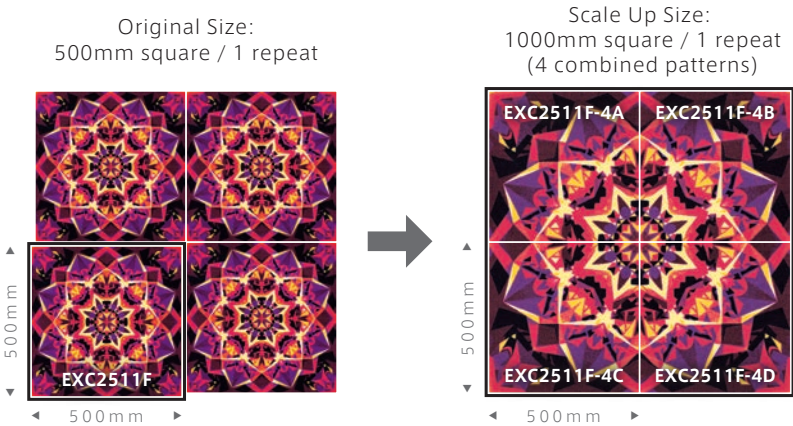


Easy Order System **SCALE UP 4**

For details, see [p.3](#)

Select patterns can by "SCALED UP" 4X the original design to align the design with the overall space.

- Four patterns combined make one repeat.
- **The price is the same as the original design.**
- Please refer to p.7 for the order conditions of "SCALE UP 4".



Full Order System - Custom Colors

For details, see [p.66](#)

Custom-made tile carpets created by listening to your desired design on a base selected from three types of materials.

Full Order
(Example)

Custom Colors

*Depending on the material, there may be patterns that do not meet your request.

RANDOM 5

A series with 5 patterns within one product number.
The patterns connect even when adjacent. By installing randomly, it creates a spacious effect.

Item List

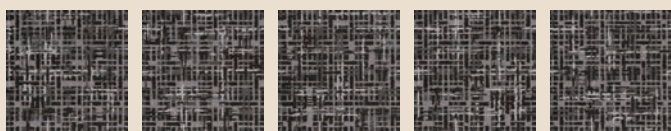
EXC-5000 Cut & Loop



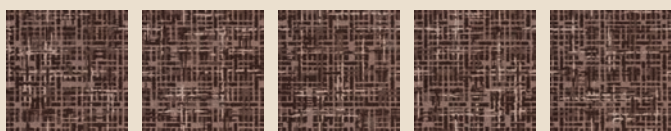
EXC5106F p.8



EXC5101 p.4



EXC5108F p.14

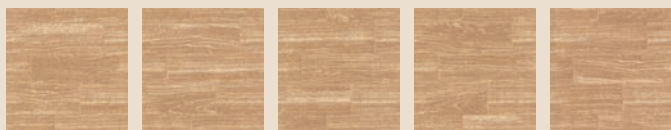


EXC5109F p.14

EXC-2000 Cut Pile



EXC2501F p.26



EXC2502F p.28



EXC5106F · EXC5107F

Caution

- There are 5 patterns for each product number.
- The 5 patterns are randomly packed. Specific patterns cannot be chosen.
- The minimum order quantity is 30m²/120pcs/36.0SQY per product number.
- EXC5106F and EXC5107F can be ordered together.
A minimum of 4m² per pattern and a combined total of 30m²/120pcs/36.0SQY is required for orders.
- For orders less than 30m²/120pcs/36.0SQY, a separate quotation will be provided.


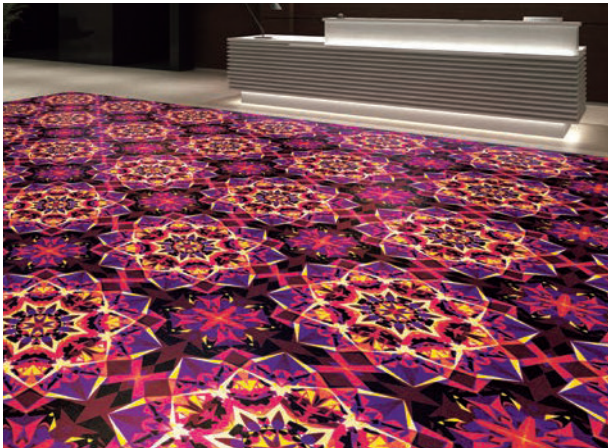
Easy Order System SCALE UP 4

We have enlarged recommended patterns from the original design by 4 times.
Large-scale patterns create bold floor designs that do not feel repetitive.

● Four patterns combined make one repeat. ● Other designs may be "scaled up" upon the request. ● The price is the same as the original design.

Item List

<p>EXC2506-4A EXC2506-4B</p>  <p>500mm</p> <p>EXC2506-4C EXC2506-4D</p> <p>p.33</p>	<p>EXC2507-4A EXC2507-4B</p>  <p>500mm</p> <p>EXC2507-4C EXC2507-4D</p> <p>p.34</p>	<p>EXC2508-4A EXC2508-4B</p>  <p>500mm</p> <p>EXC2508-4C EXC2508-4D</p> <p>p.34</p>	<p>EXC2510-4A EXC2510-4B</p>  <p>500mm</p> <p>EXC2510-4C EXC2510-4D</p> <p>p.35</p>
<p>EXC2511F-4A EXC2511F-4B</p>  <p>500mm</p> <p>EXC2511F-4C EXC2511F-4D</p> <p>p.36</p>	<p>EXC2512F-4A EXC2512F-4B</p>  <p>500mm</p> <p>EXC2512F-4C EXC2512F-4D</p> <p>p.36</p>	<p>EXC2513-4A EXC2513-4B</p>  <p>500mm</p> <p>EXC2513-4C EXC2513-4D</p> <p>p.37</p>	<p>EXC2518-4A EXC2518-4B</p>  <p>500mm</p> <p>EXC2518-4C EXC2518-4D</p> <p>p.40</p>

Original Size	Scale Up Size (4 combined patterns)
 <p>EXC2511F</p>	 <p>EXC2511F-4A to 4D</p>

Order Conditions

Quantity	30m ² or more / 1 set of 4 combined patterns *The total of 4 Scale Up Size product numbers must be 30m ² or more.
Delivery Time	3 week to produce

- For orders less than 30m², a separate quotation will be provided.
- Delivery time may vary depending on the quantity and timing. For details, please contact the TOLI sales office.

Relax

EXC-5000

Cut & Loop

The combination of glossy yarn and rich-textured cut & loop creates a luxurious and sophisticated atmosphere.



EXC5101 · EXC5031F

Design inspired by Kilim weaving,
finished in warm colors.



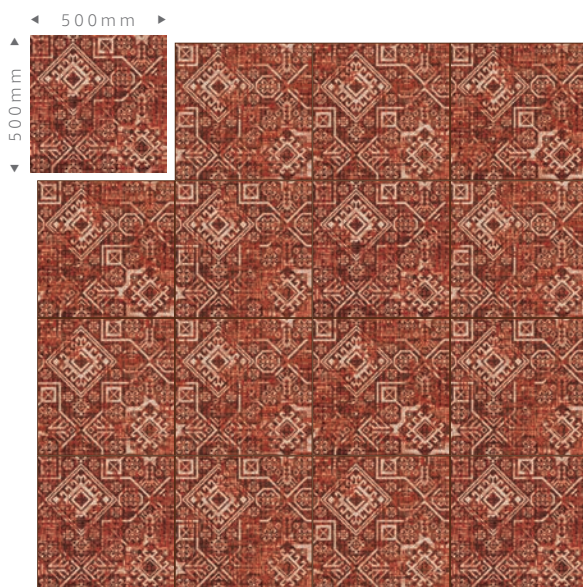
EXC5101



EXC5101 [RANDOM 5]

This pattern has 5 variations within
one product number.
They can be installed randomly.

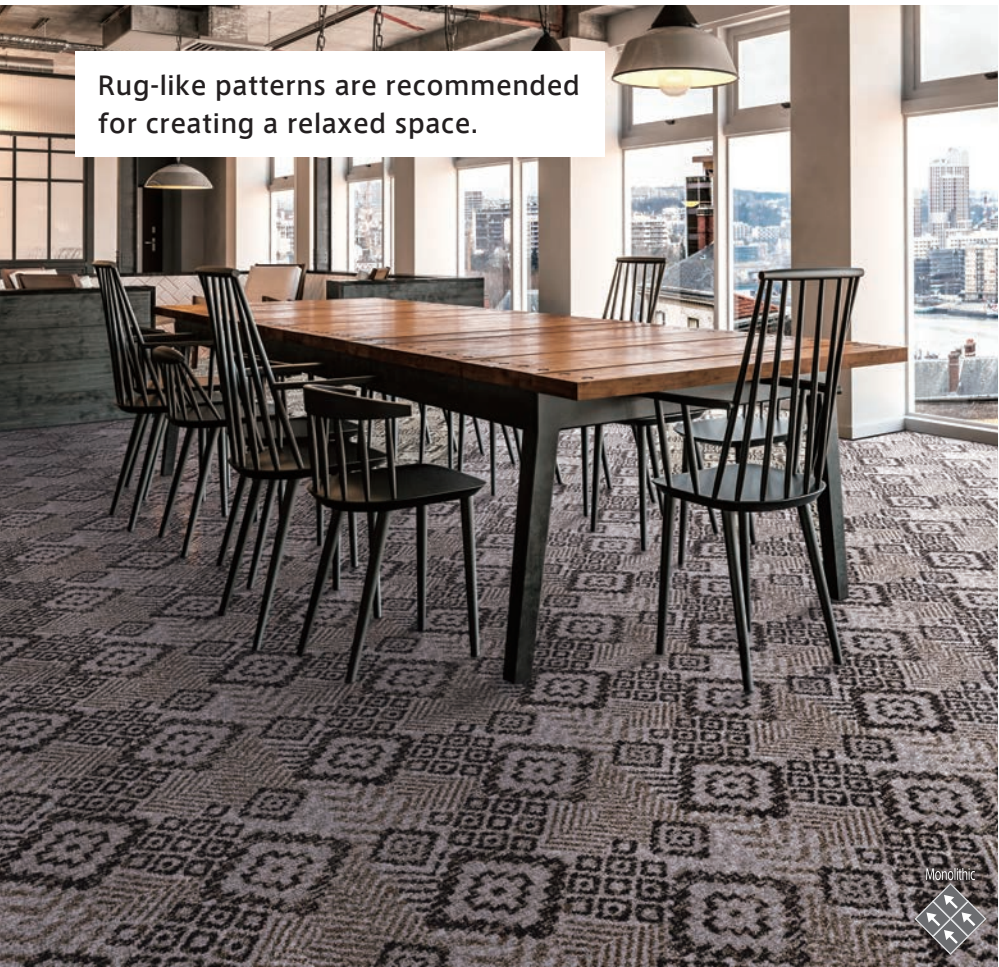
For details, please refer to p.6 [RANDOM 5].



KILIM WEAVE

Relax

Rug-like patterns are recommended for creating a relaxed space.



GEOLUX

EXC5102F

500 mm



Monolithic

EXC5102F

GEOFLOW

EXC5103F

500 mm



Geometric patterns finished with a warm woven texture.



Monolithic

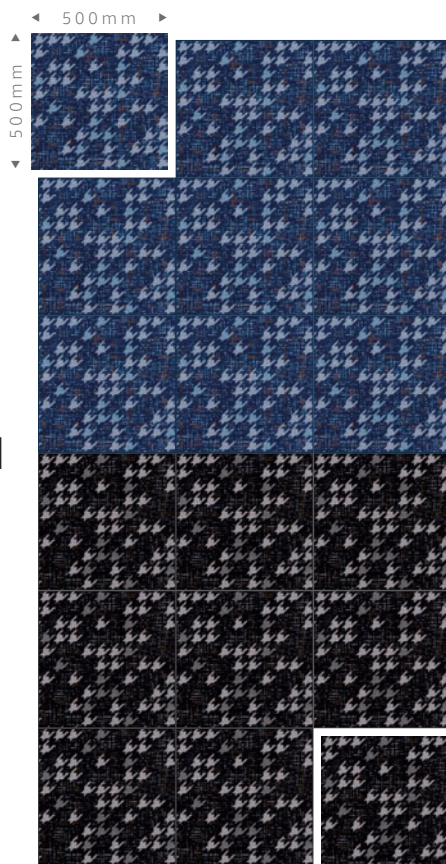


EXC5103F



EXC5104F

EXC5104F



HOUSTDOOTH

EXC5105F



EXC5105F



Design reminiscent of a garden with grass and blocks provides tranquility to the space.

Monolithic



EXC5106F · EXC5107F



EXC5106F · EXC5107F

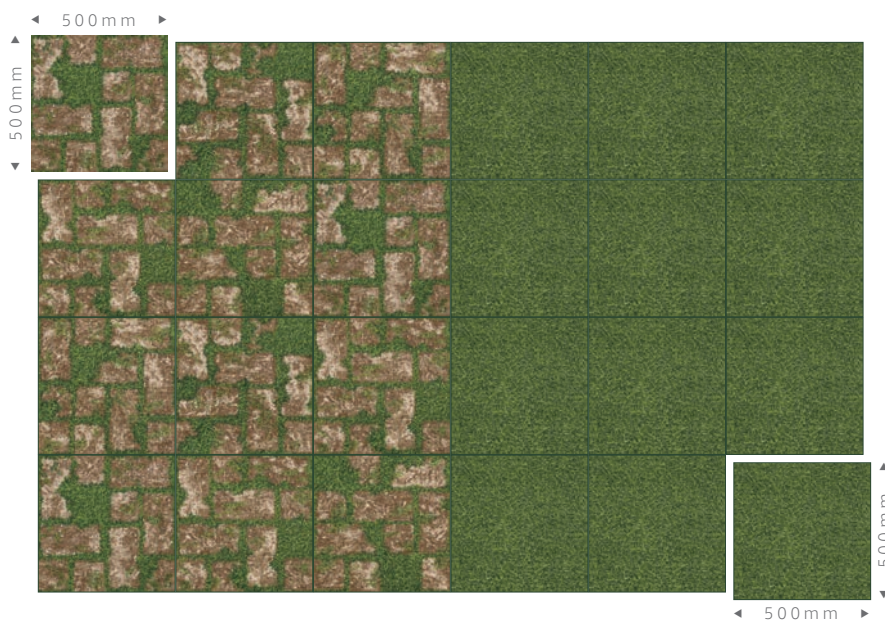
GARDEN BLOCK



EXC5106F Ⓢ [RANDOM 5]

This pattern has 5 variations within one product number. They can be installed randomly.

Ⓢ For details, please refer to p.6 [RANDOM 5].



EXC5107F

GARDEN GRASS

- EXC5106F and EXC5107F can be combined. Orders can be placed if the total is 4m² or more per pattern and 30m² or more combined.
- Colors may not match if manufacturing lots differ.

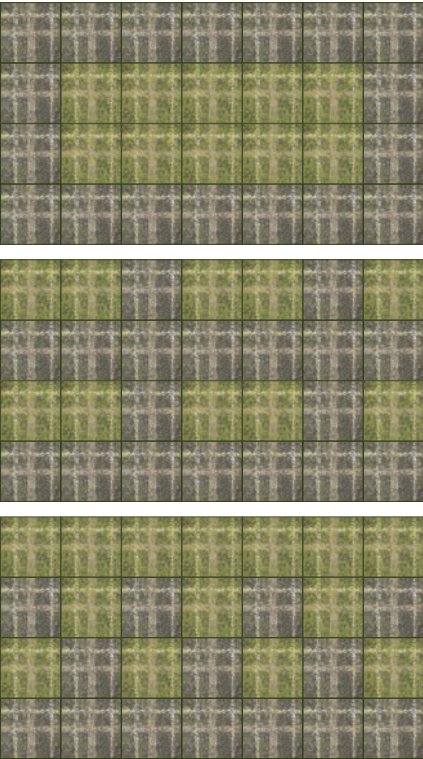


EXC5110 · EXC5111

RUTS



EXC5110



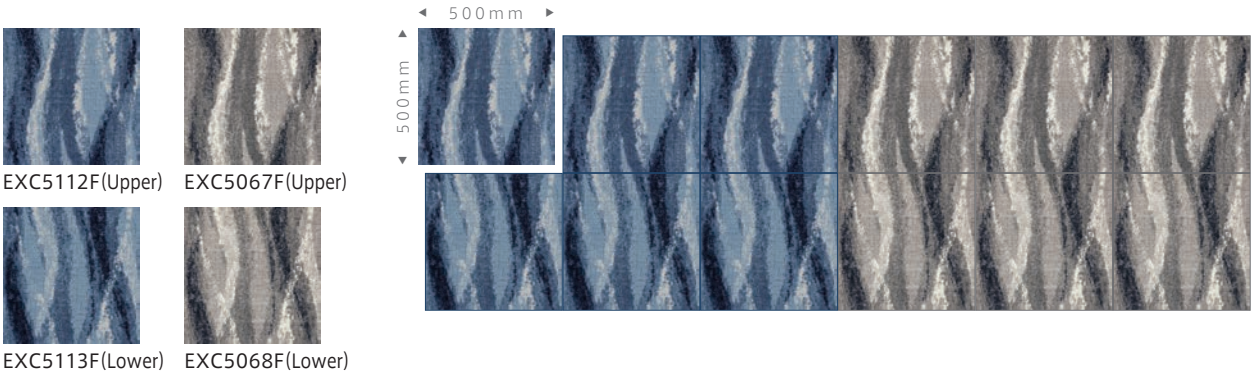
Patterns connect,
allowing for flexible installation.



EXC5110



EXC5067F · EXC5068F

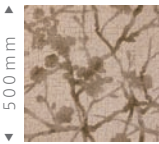


WIND & WATER

- Two pieces combined make one repeat.
- EXC5067F and EXC5068F, EXC5112F and EXC5113F are sold as sets. Orders can be placed if the total of the two product numbers is 30m² or more.
- Colors may not match if manufacturing lots differ.

EXC5001

◀ 500 mm ▶



BLOSSOMS



Expressed the silhouette of plum blossoms emotionally with watercolor blurring.



EXC5001

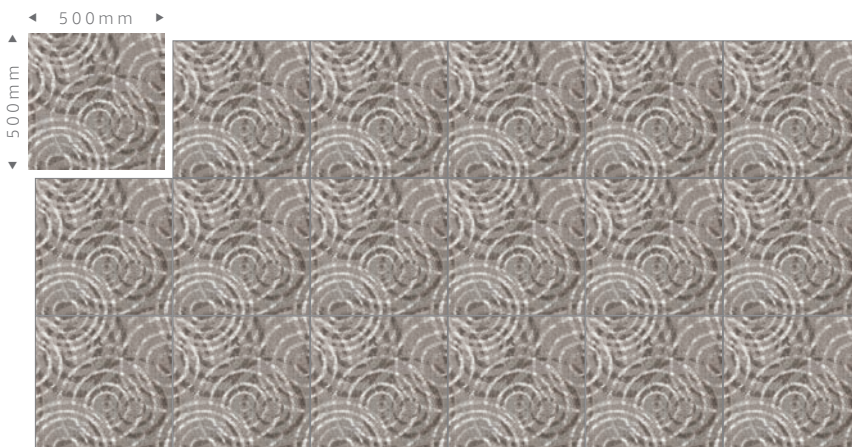


Imagined overlapping water ripples.



EXC5069F

EXC5069F



RAIN ON THE LAKE

Comfort

The deep woven pattern makes the space elegant.

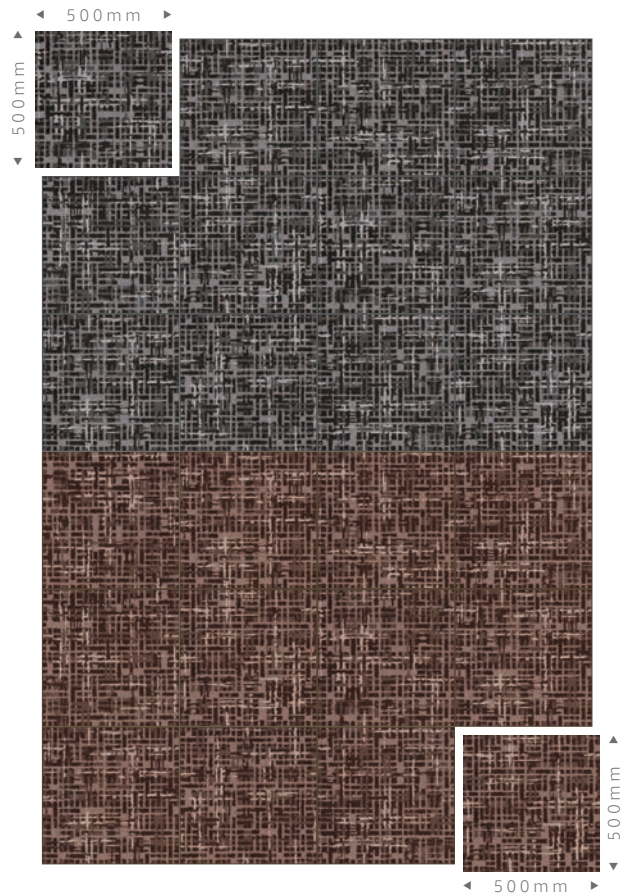


EXC5109F

LUXLOOM



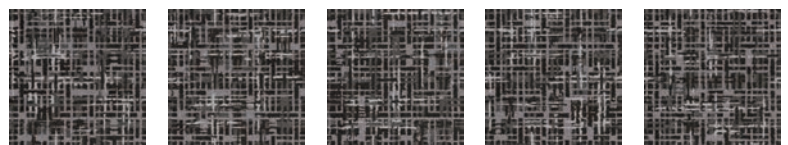
EXC5108F · TTN3902



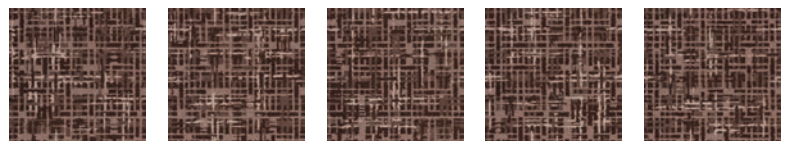
Monolithic



EXC5108F



EXC5108F [RANDOM 5]



EXC5109F [RANDOM 5]

This pattern has 5 variations within one product number.
They can be installed randomly.

⊙ For details, please refer to p.6 [RANDOM 5].

Comfort

◀ 500 mm ▶

▲ 500 mm ▼



EXC5029F EXC5030F



EXC5031F EXC5051F



EXC5114F EXC5037F



EXC5049F EXC5052F



EXC5036F

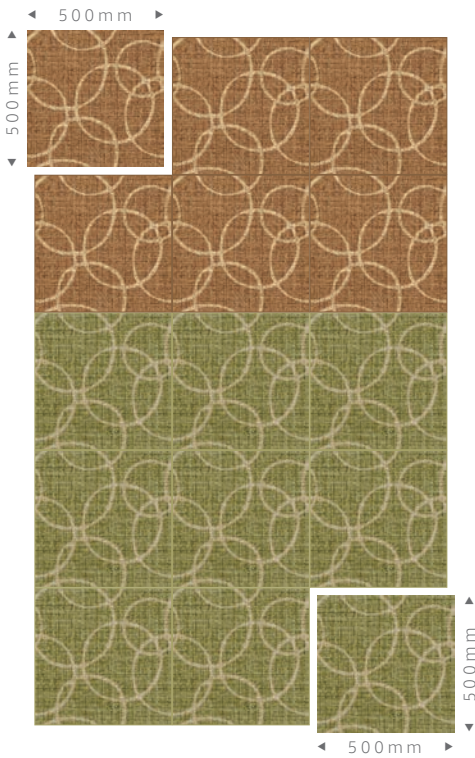
SOFTWEAVE

Expressed plain weave texture that adds warmth and softness to the space.

EXC5114F · EXC5115F

16

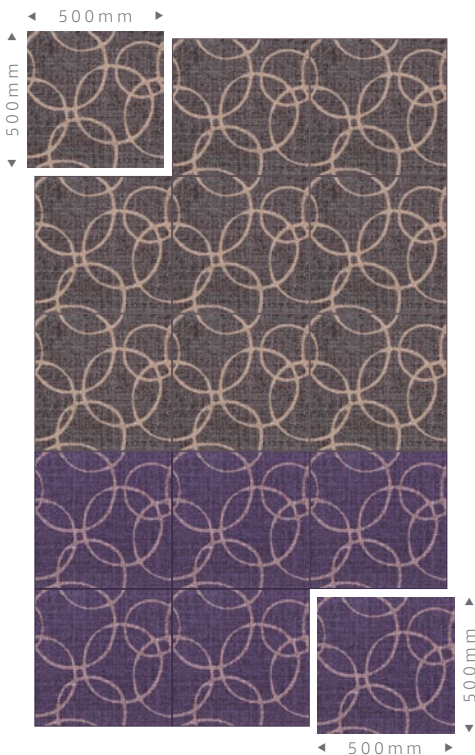
EXC5045F



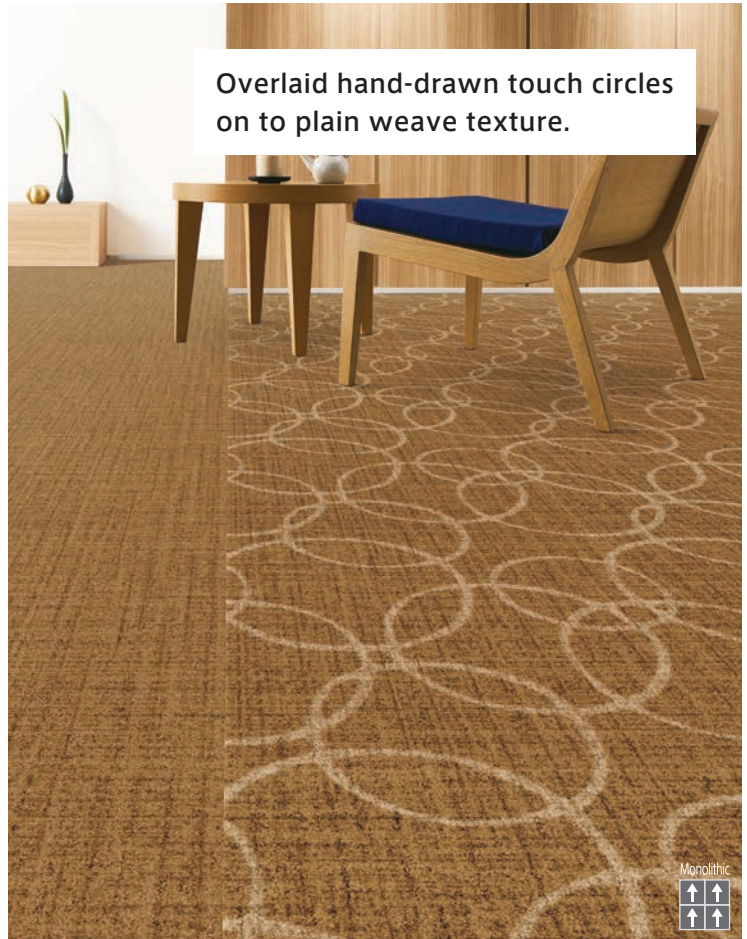
EXC5115F

SOFTWEAVE SPHERES

EXC5047F



EXC5048F



EXC5045F · EXC5049F



EXC5047F · EXC5048F

● EXC5045F, EXC5047F, EXC5048F, EXC5115F use the same colors as p.20 EXC5049F, EXC5051F, EXC5052F, EXC5114F, so they can be combined.
(However, there may be slight color differences, so please be careful.)

Comfort

Circle design with connected patterns creating large patterns.

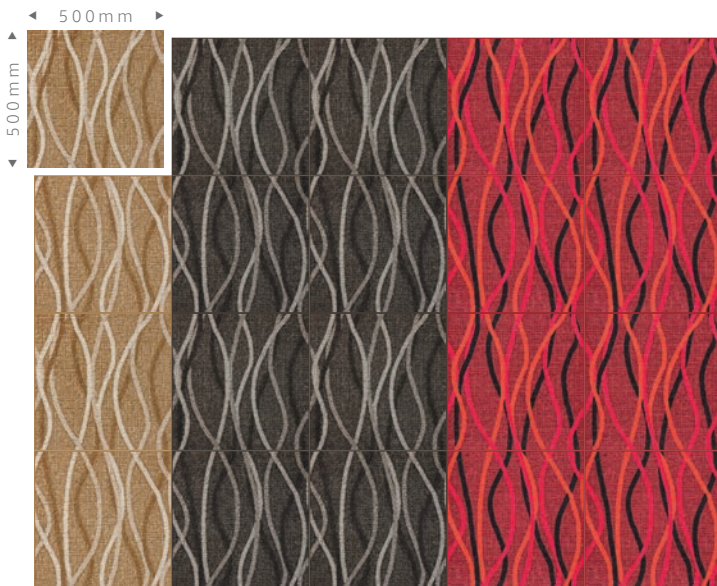


EXC5053F · EXC5054F



CIRQUE

EXC5054F



EXC5004F(Upper)



EXC5006(Upper)



EXC5055F(Upper)



EXC5005F(Lower)



EXC5007(Lower)



EXC5056F(Lower)

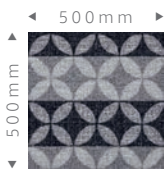
ROPES



EXC5006 · EXC5007

- Two pieces combined make one repeat.
- EXC5004F and EXC5005F, EXC5055F and EXC5056F are sold as sets. Orders can be placed if the total of the two product numbers is 30m² or more.
- Colors may not match if manufacturing lots differ.

EXC5079F



TR-7

Modernized traditional
seven-treasure pattern.



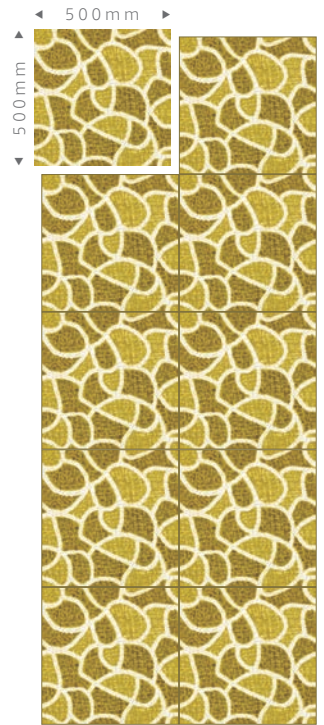
EXC5079F



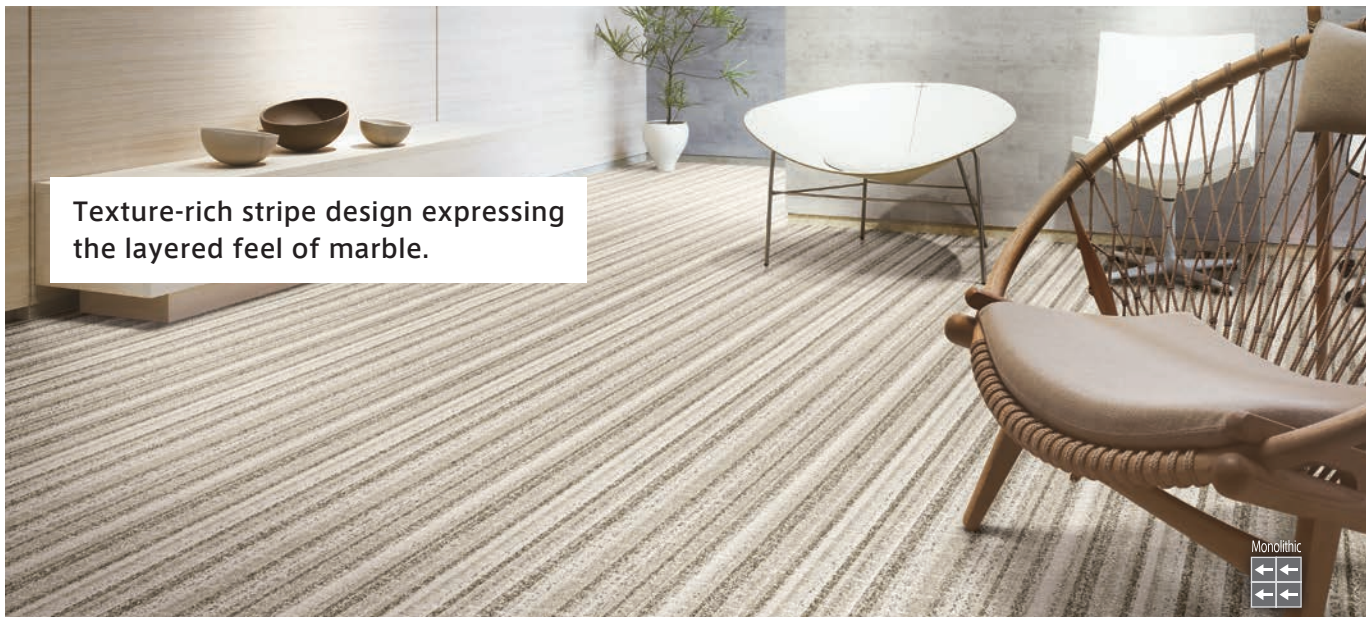
Pattern with appealing hand-drawn-like organic curves.

ORGANIC CURVES

EXC5078F



EXC5078F



Texture-rich stripe design expressing the layered feel of marble.



EXC5013F



EXC5013F

SIMPLY MARBELE-OUS



EXC5011F

WAVE OF
TRANQUILITY

EXC5011F

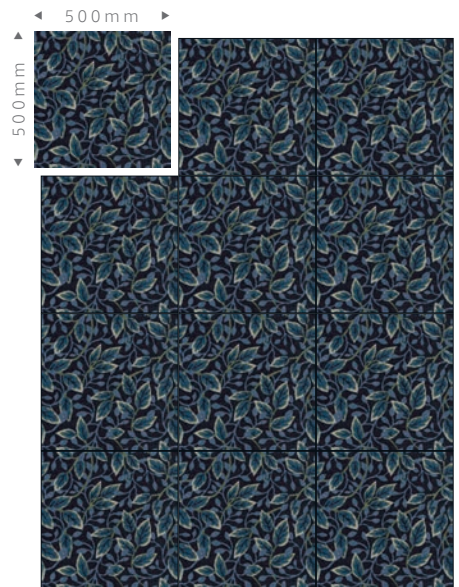
◀ 500 mm ▶





IVY LEAGUE

EXC5116F



EXC5116F

EXC5019F



LACE

EXC5057F

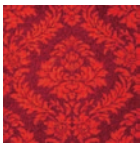


EXC5057F

Elegant



EXC5071



EXC5016



EXC5017

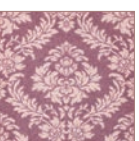
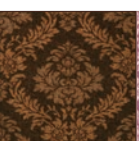
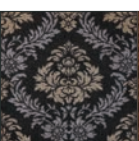
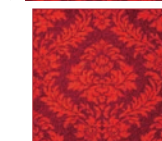
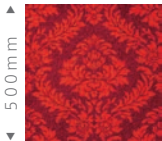


EXC5018F



EXC5071

◀ 500 mm ▶



DAMASK



EXC5017



EXC5018F

FLOR-ALL

EXC5010F



Chic floral patterns combine naturalness and elegance.



EXC5010F



Finished elegant and classical arabesque in natural colors.

EXC5044



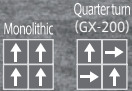
EXC5044

ARABESQUE

EXC- 2000

Cut Pile

Cut pile, capable of expressing a variety of colors and delicate patterns, fascinates with its vivid colors and bold designs.



EXC2501F · GX2065

Design with the realistic texture of concrete and tile joints. It creates a cool and modern space.



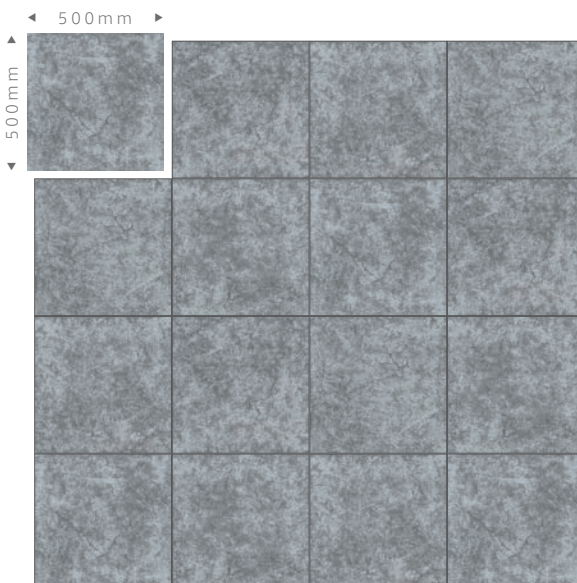
EXC2501F



EXC2501F [RANDOM 5]

This pattern has 5 variations within one product number. They can be installed randomly.

For details, please refer to p.6 [RANDOM 5].

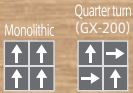


MODERN MORTAR

● This pattern has tile joints.

Material

Creates a warm space with the gentle texture of wood grain.



EXC2502F · GX2082



EXC2502F



EXC2502F [RANDOM 5]

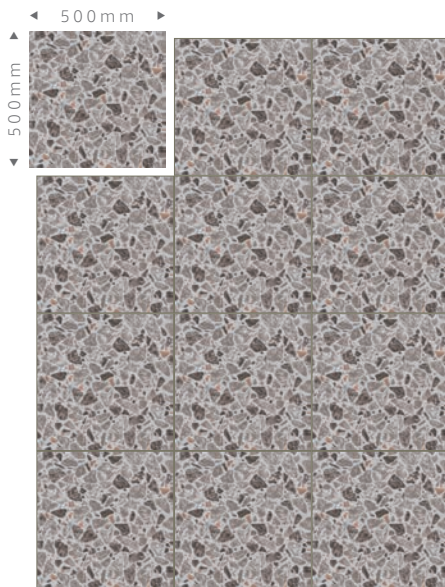


TIMBER

This pattern has 5 variations within one product number. They can be installed randomly.
⦿ For details, please refer to p.6 [RANDOM 5].

TEXTRAZZO

EXC2503F



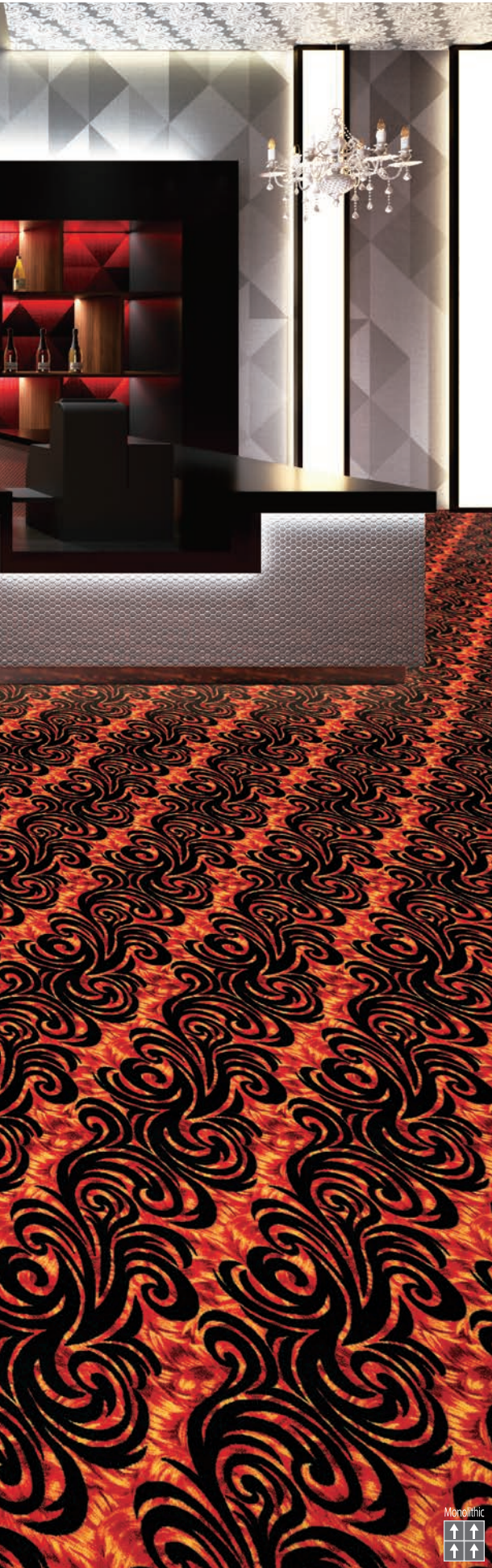
EXC2503F



EXC2503F · GX2067 · GX2084

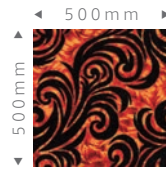
The continuously extending arabesque pattern gives a dynamic impression.





EXC2504

EXC2504



ARABESQUE
INFINITY



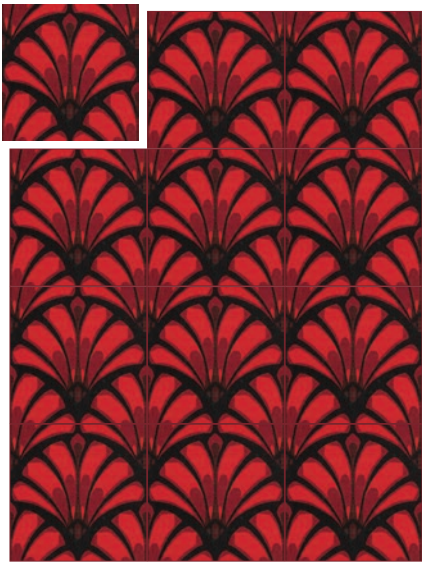
EXC2504

BOLD BOTANY

EXC2505F

500 mm

500 mm



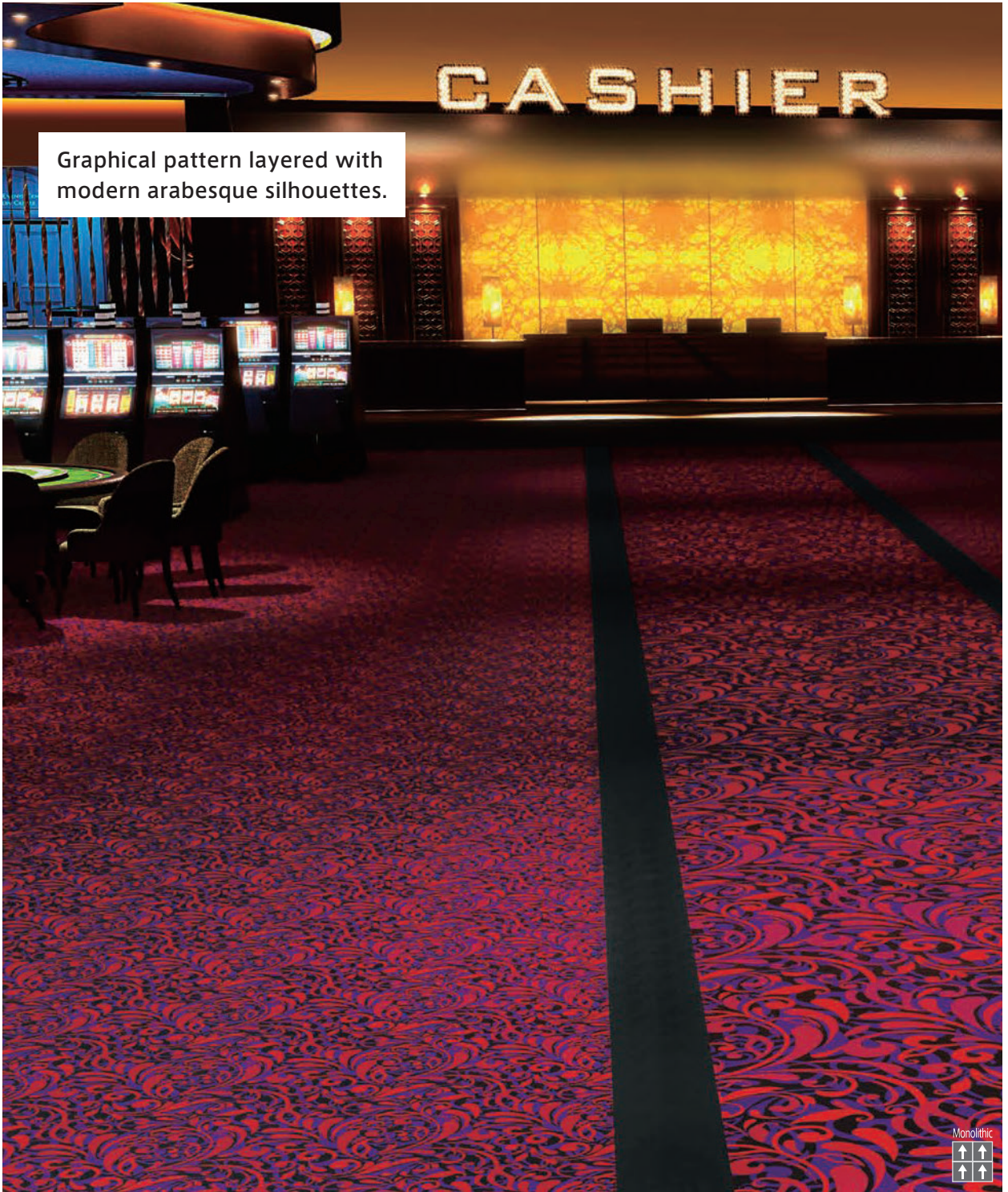
EXC2505F



Bold botanical design
that brightly colors the space.

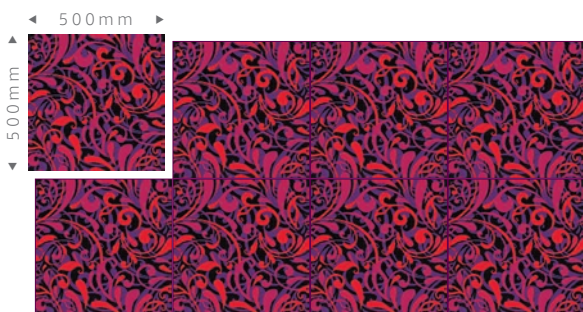


EXC2505F



EXC2506 · EXC2506-4A to 4D · GX2059
(GX2059 uses half cuts.)

EXC2506



★ SCALE UP 4

EXC2506-4A EXC2506-4B



EXC2506-4C EXC2506-4D

**SIMPLY
COMPLEX**

ROSE GARDEN



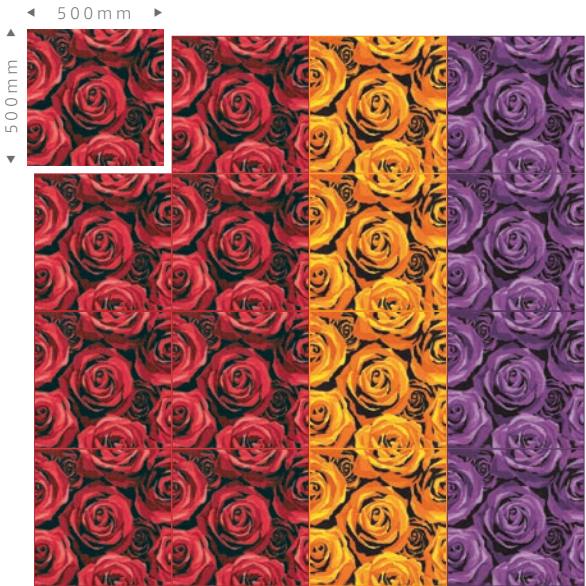
EXC2507



EXC2508



EXC2509F



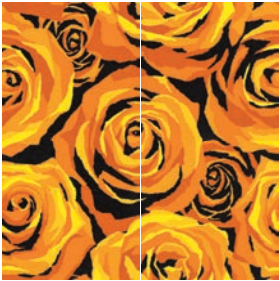
★ SCALE UP 4

EXC2507-4A EXC2507-4B



EXC2507-4C EXC2507-4D

EXC2508-4A EXC2508-4B



EXC2508-4C EXC2508-4D



For a luxurious interior filled with bright red roses.



EXC2507 · GX2059

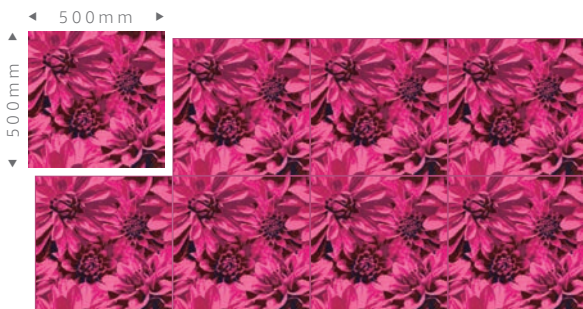
Design filled with pink dahlias that vividly color the space.



EXC2510

DAHLIA-CIOUS

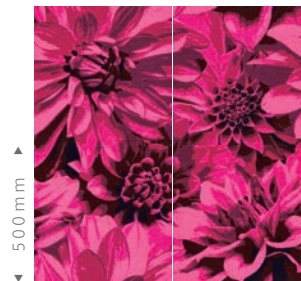
EXC2510



★ SCALE UP 4

EXC2510-4A

EXC2510-4B



EXC2510-4C

EXC2510-4D

★ Please refer to p.7 for the order conditions of **SCALE UP 4**.

Imagined a glamorous world of kaleidoscopes.
It colors the space luxuriously.

Dolis Corporation



EXC2511F · EXC2511F-4A to 4D · EXC2512F · EXC2512F-4A to 4D

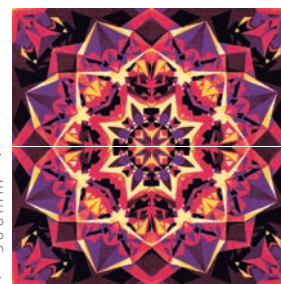
EXC2511F



EXC2512F

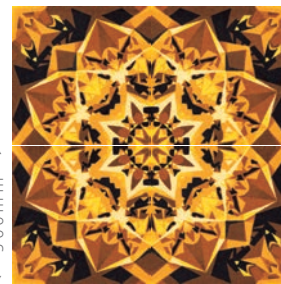
★ SCALE UP 4

EXC2511F-4A EXC2511F-4B



EXC2511F-4C EXC2511F-4D

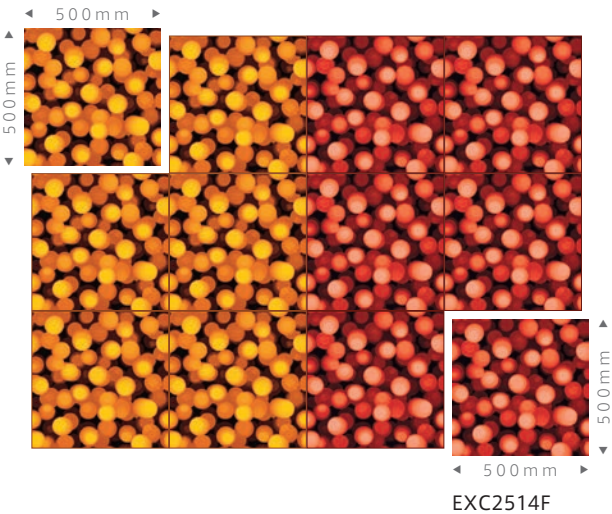
EXC2512F-4A EXC2512F-4B



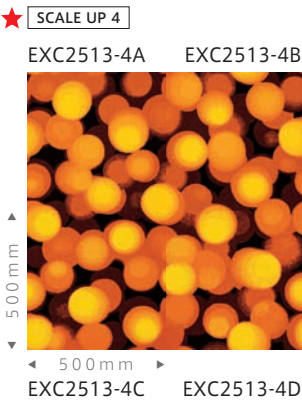
EXC2512F-4C EXC2512F-4D

KALEIDOSCOPE

EXC2513



LANDSCAPE OF LIGHTS



Motif of a landscape filled with neon lights.

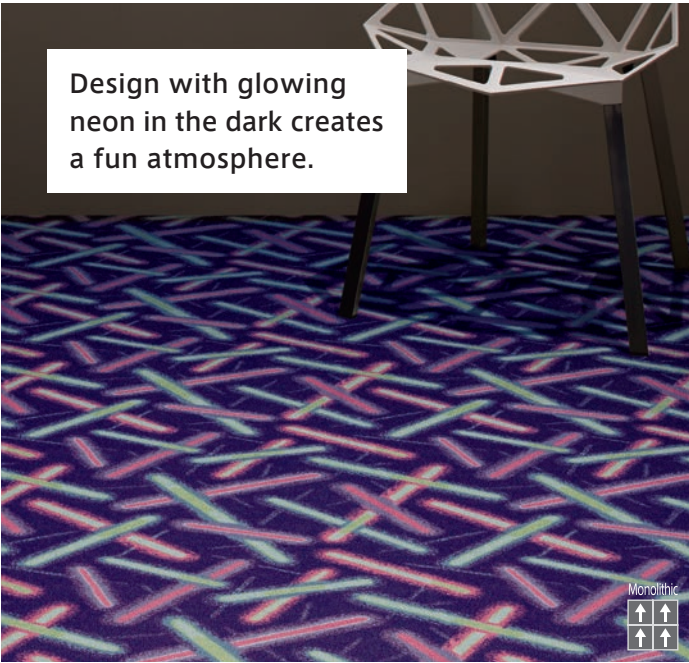
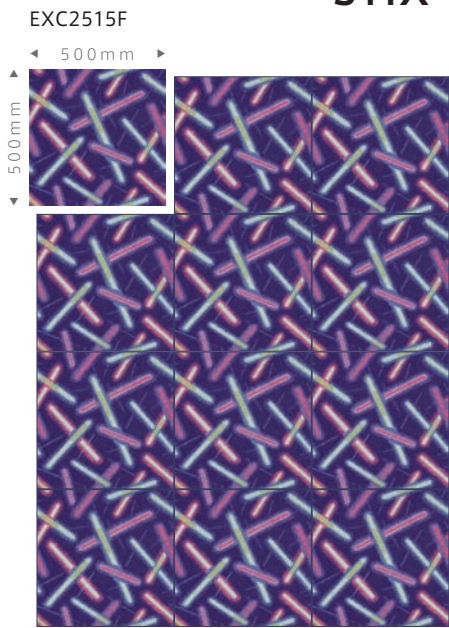


EXC2513 · EXC2513-4A to 4D · GX2059



EXC2514F

STIX



EXC2515F

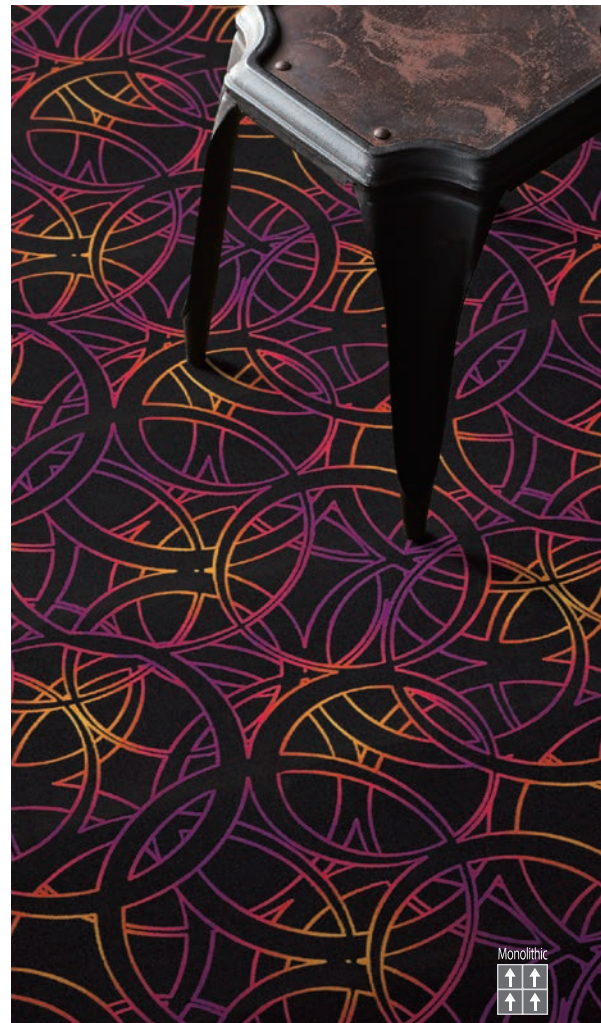
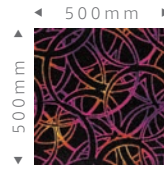


EXC2515F

Combined circle silhouettes and gradients. Recommended for unique commercial spaces.

MOOD RINGS

EXC2516

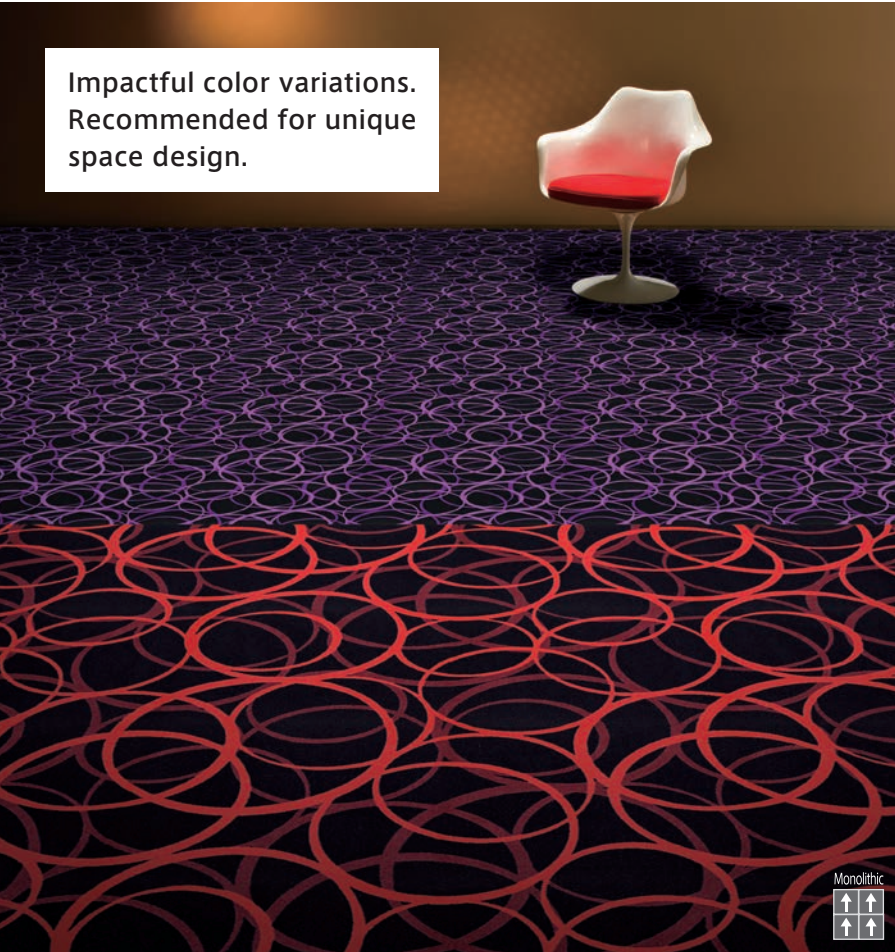


EXC2516 - GX2059

EXC2516

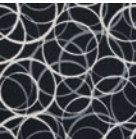


EXC2517



EXC2518-4A to 4D · EXC2519

RINGS



EXC2517



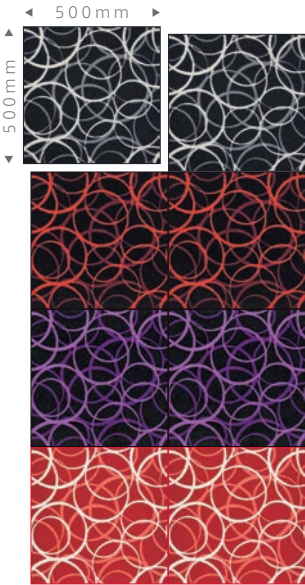
EXC2518



EXC2519

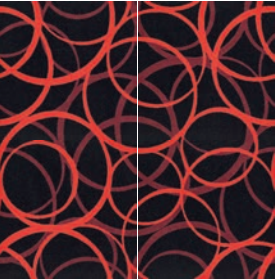


EXC2520



★ SCALE UP 4

EXC2518-4A EXC2518-4B

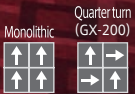
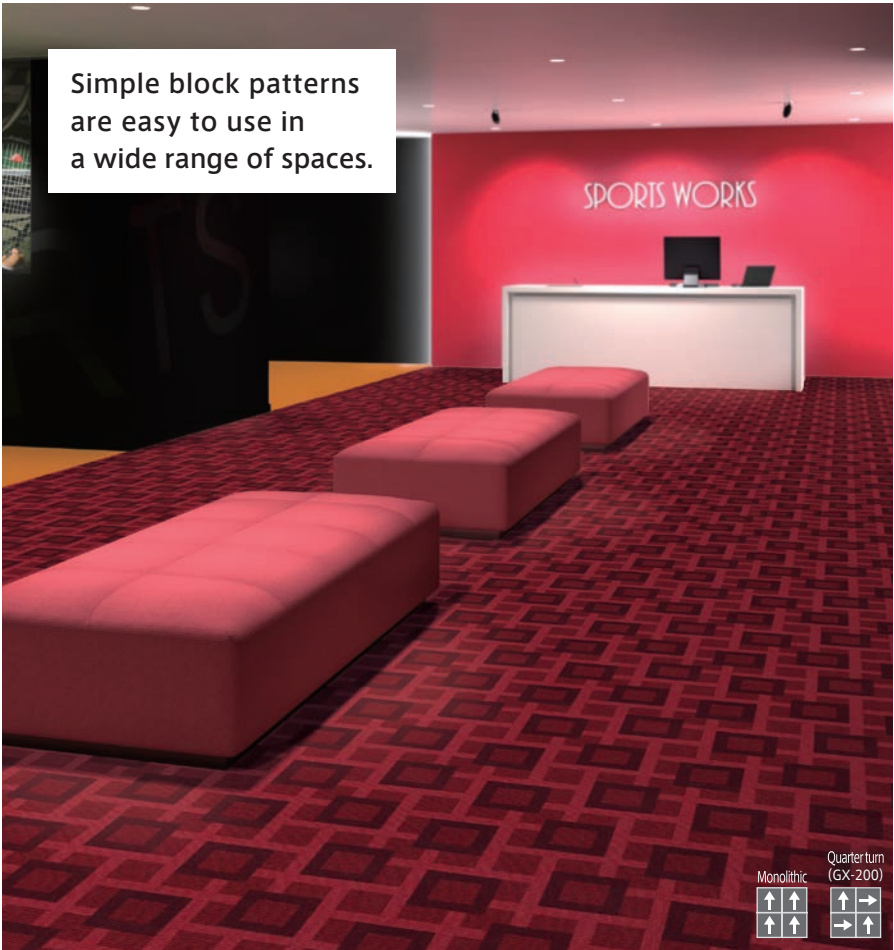
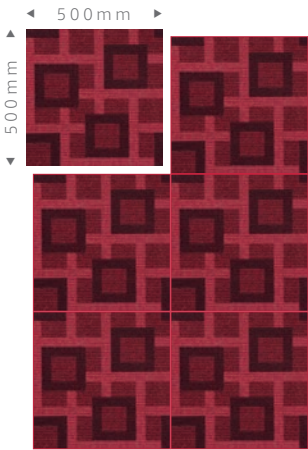


EXC2518-4C EXC2518-4D

Simple block patterns
are easy to use in
a wide range of spaces.

BLOCKS

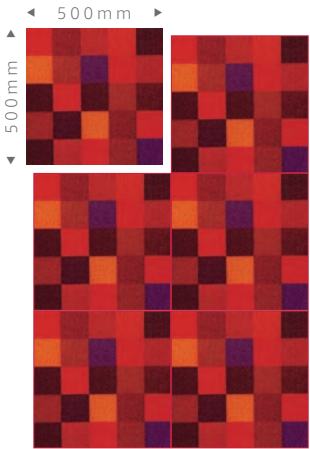
EXC2521F



EXC2521F · GX2067

Adds color to the space
with harmonious tones.

EXC2522F

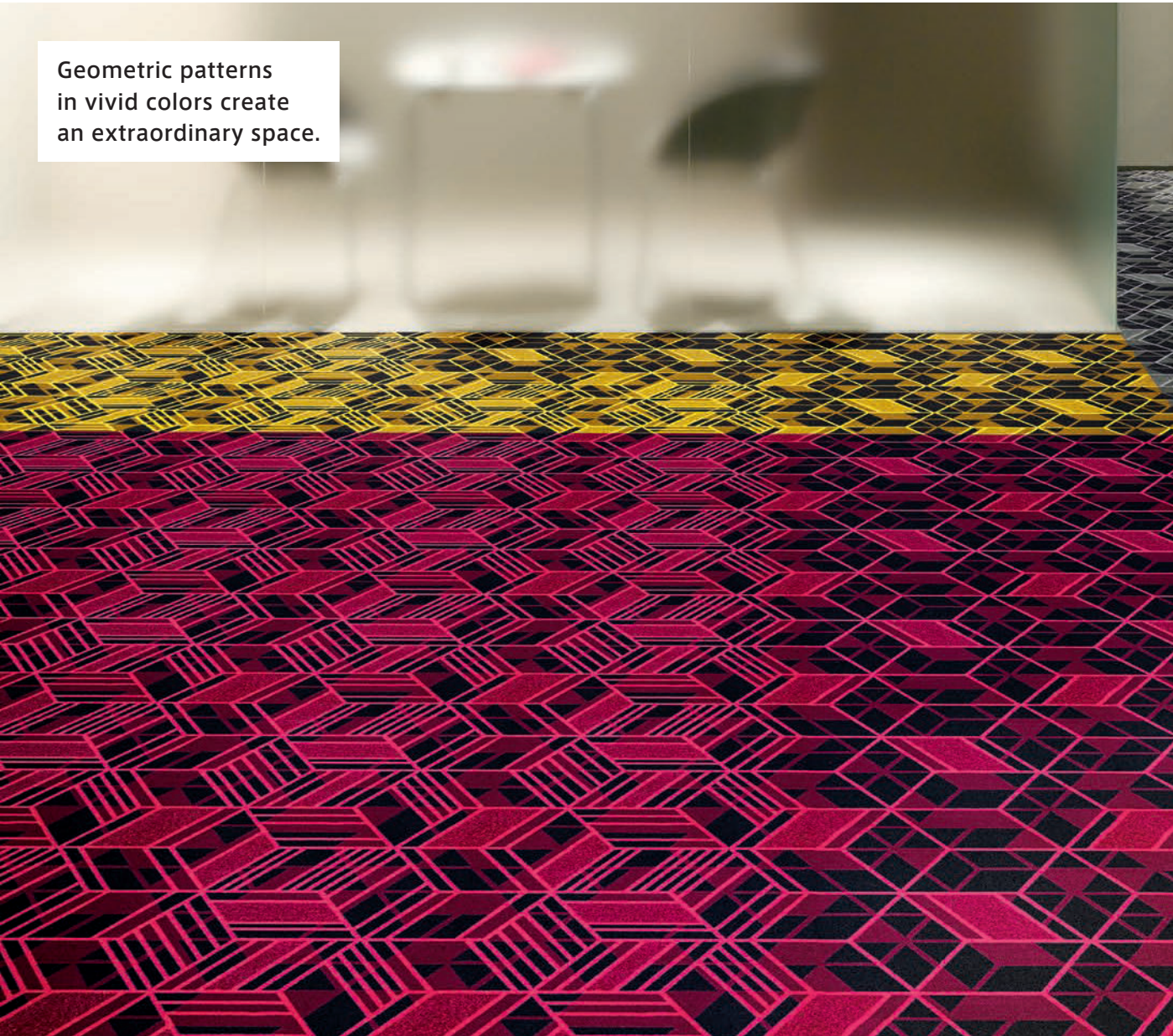


SQUARED



EXC2522F

Geometric patterns
in vivid colors create
an extraordinary space.



EXC2523F · EXC2524F · EXC2525F · EXC2526F · EXC2527F · EXC2528F



VIVE



EXC2523F



EXC2525F



EXC2527F

VIVIER



EXC2524F



EXC2526F



EXC2528F



EXC2523F

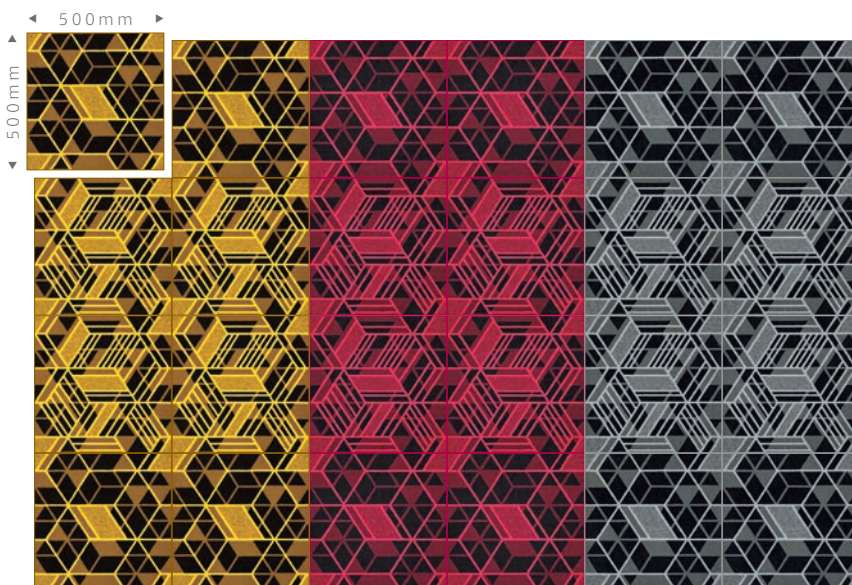


Monolithic
↑↑
↑↑



Monolithic
↑↑
↑↑

EXC2527F · EXC2528F



LAYERED DAMASK

Patterns connect,
allowing for flexible installation.

- EXC2523F and EXC2524F,
EXC2525F and EXC2526F,
EXC2527F and EXC2528F can be combined.
Orders can be placed if the total is 4m² or
more per pattern and 30m² or more combined.
- Colors may not match if manufacturing
lots differ.

Casual

CALM



EXC2529F

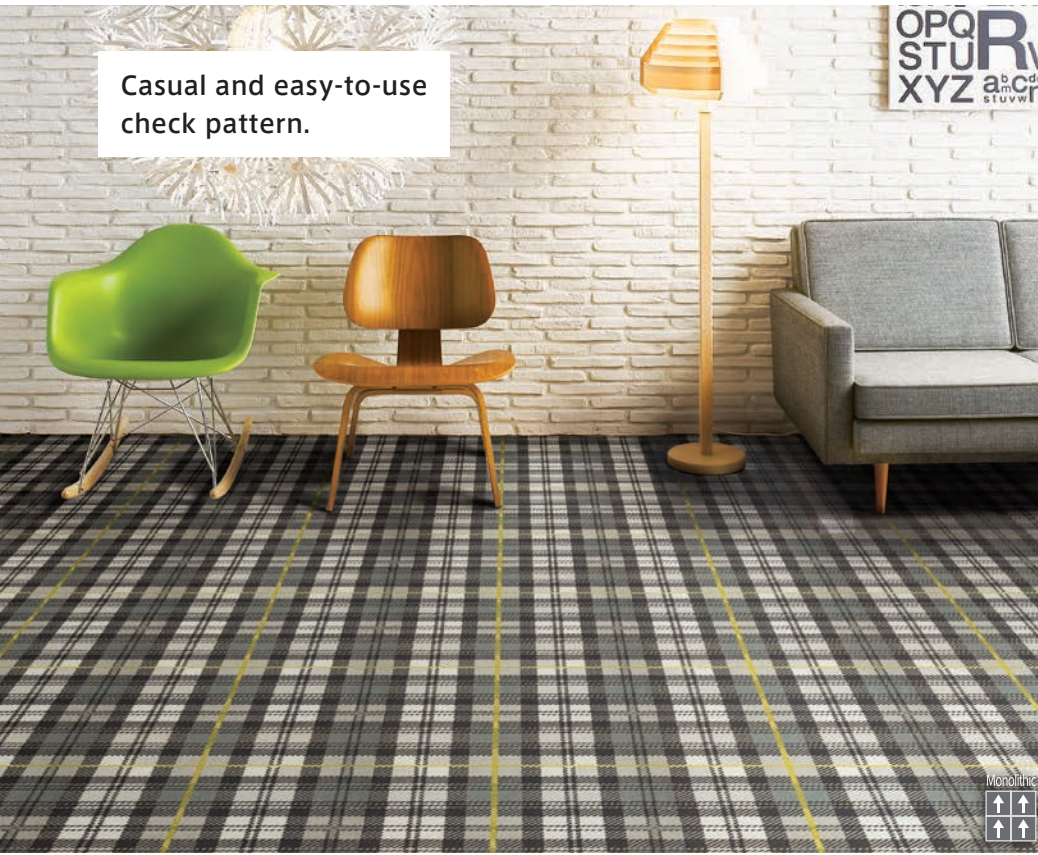


EXC2531F

RHYTHM



Casual and easy-to-use
check pattern.



EXC2532F

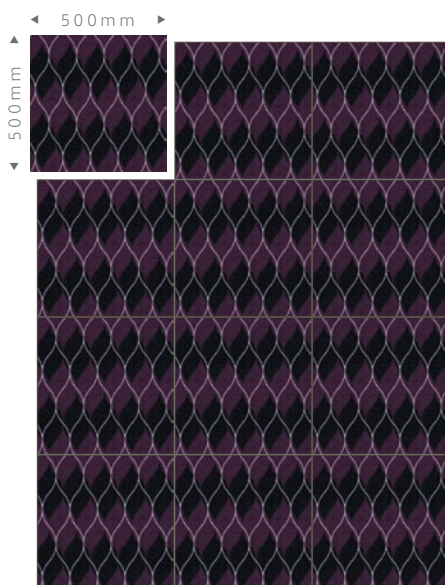
CHECK

EXC2532F

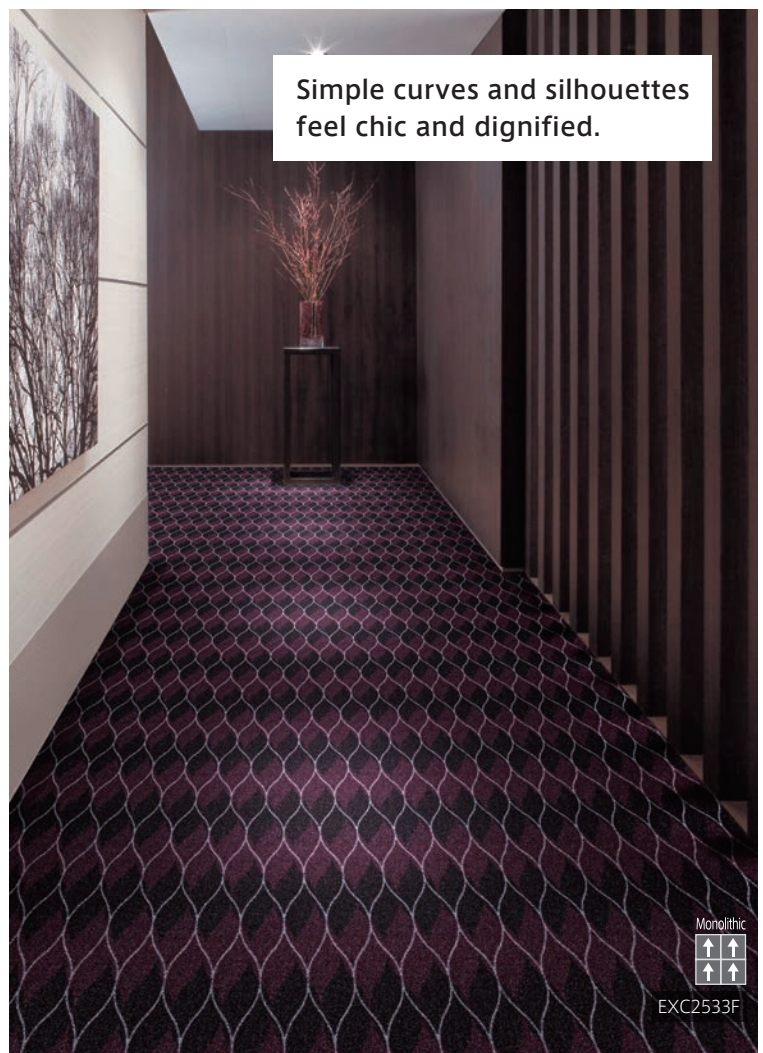


CHIC

EXC2533F



Simple curves and silhouettes
feel chic and dignified.



EXC2533F

KUMIKO

EXC2534F



Design inspired by Kumiko work that colors a Japanese-modern space.



EXC2534F





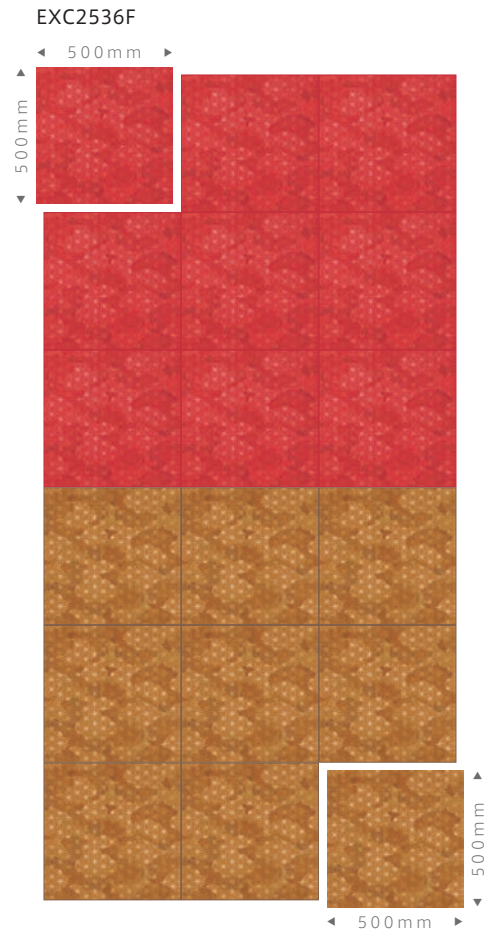
EXC2535F



PATCHWORK



EXC2536F



ASANOHA



Combining two patterns creates an emotional cherry blossom pattern that makes the space feel expansive.

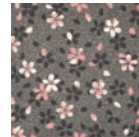


EXC2538F · EXC2539F

CHERRY BLOSSOM/ MORE CHERRY BLOSSOMS



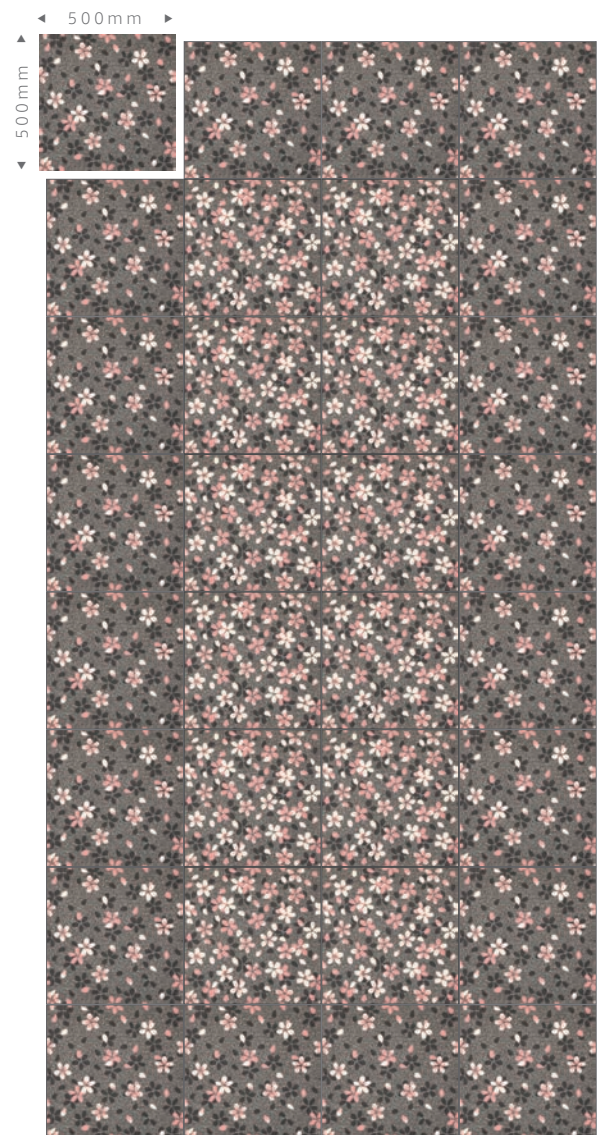
EXC2538F · EXC2539F



EXC2538F



EXC2539F



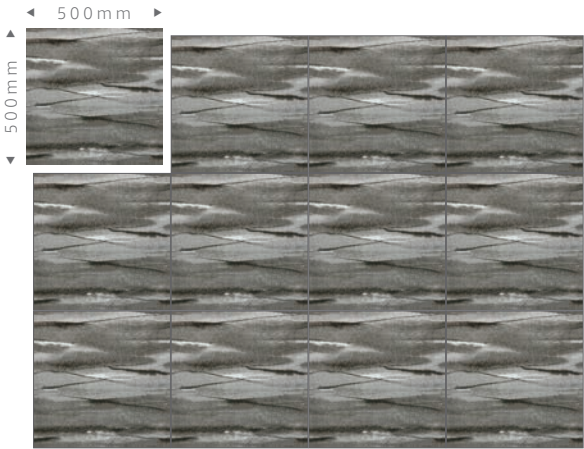
Patterns connect, allowing for flexible installation.

- EXC2538F and EXC2539F can be combined. Orders can be placed if the total is 4m² or more per pattern and 30m² or more combined.
- Colors may not match if manufacturing lots differ.



EXC2540F

EXC2540F



BRUSH LINES

Designed the elegant chrysanthemum flowers in a modern style, giving a graceful atmosphere.



EXC2541F

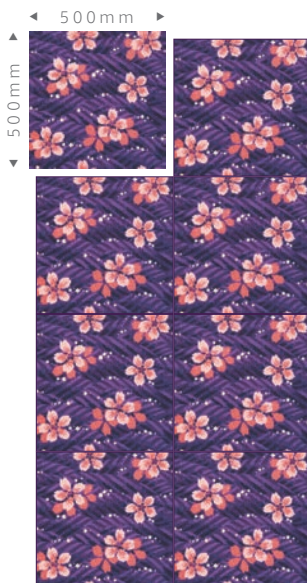
EXC2541F



CHRYSANTHEMUM

FLOATING CHERRY BLOSSOMS

EXC2542F



Elegant coordination of cherry blossoms and waves that create a gorgeous Japanese space.

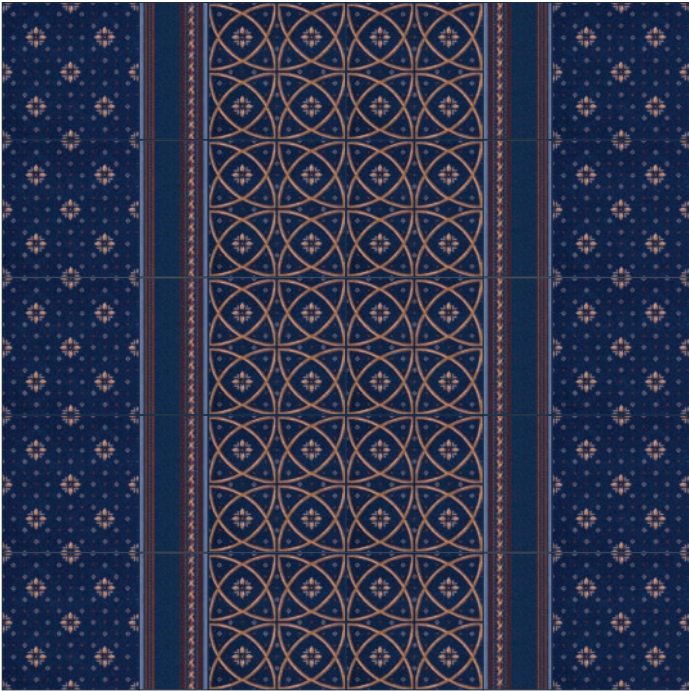


EXC2542F

Classical



ELEGANCE

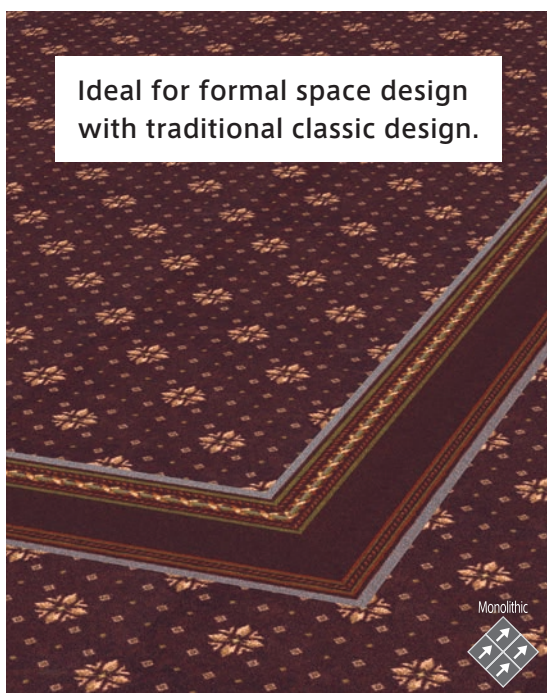




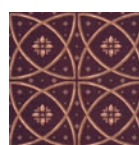
EXC2546F · EXC2547F · EXC2548F
(The border of EXC2548F is rotated 90 degrees at the corners.)



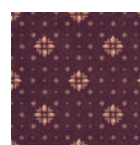
EXC2544F



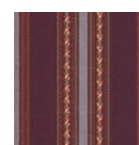
EXC2544F · EXC2545F
(The border of EXC2545F is rotated 90 degrees at the corners.)



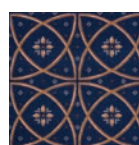
EXC2543F



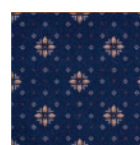
EXC2544F



EXC2545F



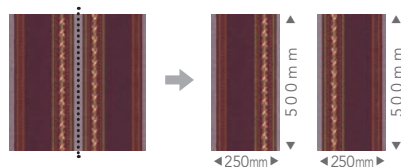
EXC2546F



EXC2547F



EXC2548F



- EXC2545F and EXC2548F become left and right borders when cut in the center.

- The following product numbers can be combined with base and border. Orders can be placed if the total is 4m² or more per pattern and 30m² or more combined.

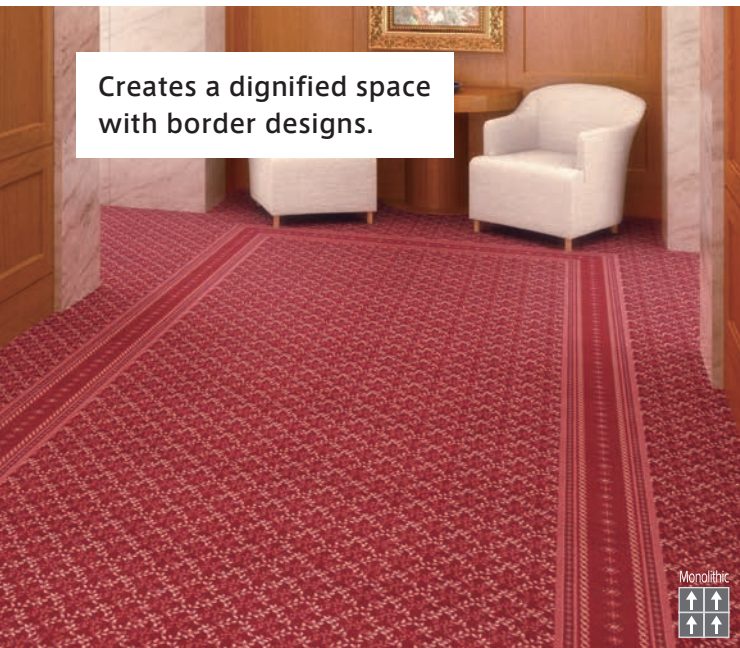
Base	Border
EXC2543F · EXC2544F	EXC2545F
EXC2546F · EXC2547F	EXC2548F

- Colors may appear different if the direction of the arrows changes. Please be careful.
- Colors may not match if manufacturing lots differ.

Classical



EXC2549F · EXC2551F



Creates a dignified space
with border designs.



EXC2550F · EXC2551F

(The border of EXC2551F is rotated 90 degrees at the corners.)



EXC2549F



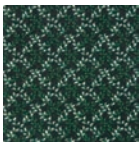
EXC2550F



EXC2551F



EXC2552F



EXC2553F



EXC2554F



● EXC2551F and EXC2554F become left and right borders when cut in the center.

Elegant design with scattered bouquets and ribbons.



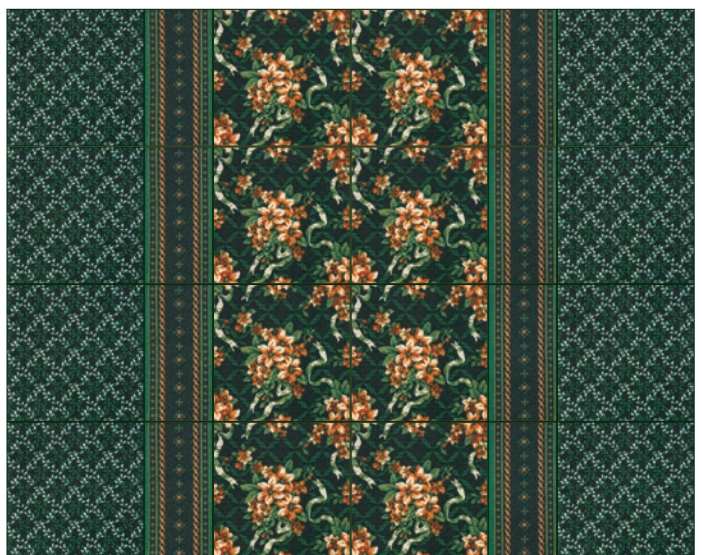
EXC2552F

BOUQUETS & RIBBONS

- The following product numbers can be combined with base and border. Orders can be placed if the total is 4m² or more per pattern and 30m² or more combined.

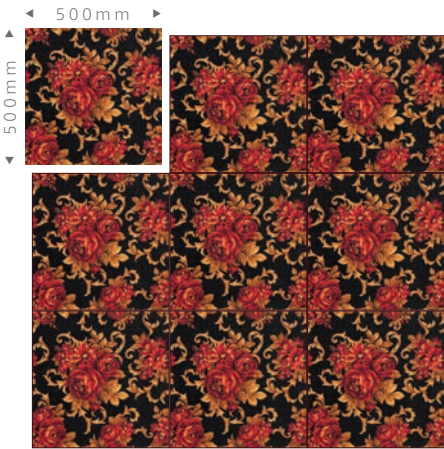
Base	Border
EXC2549F · EXC2550F	EXC2551F
EXC2552F · EXC2553F	EXC2554F

- Colors may appear different if the direction of the arrows changes. Please be careful.
- Colors may not match if manufacturing lots differ.



BRIDE'S BOUQUET

EXC2555



EXC2555

Luxurious bouquet patterns
create a glamorous space.



EXC2555

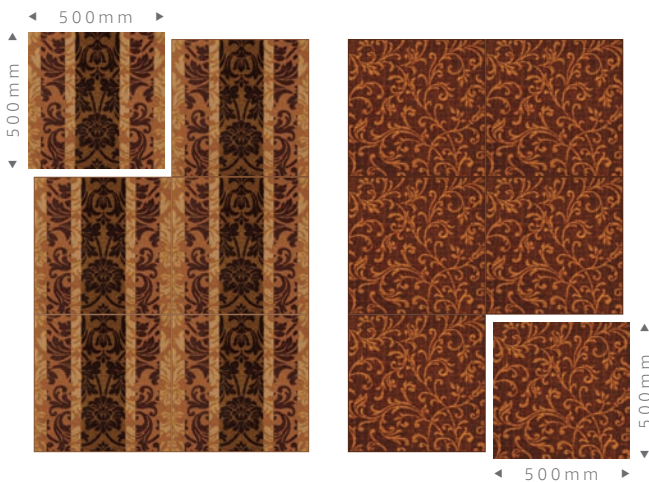
Boldly layered damask patterns and stripes create a luxurious design.



EXC2556F

LAYERED DAMASK

EXC2556F



EXC2557F

CLASSIC ARABESQUE

Classic arabesque patterns have timeless elegance.



EXC2557F



LEAF & VINE

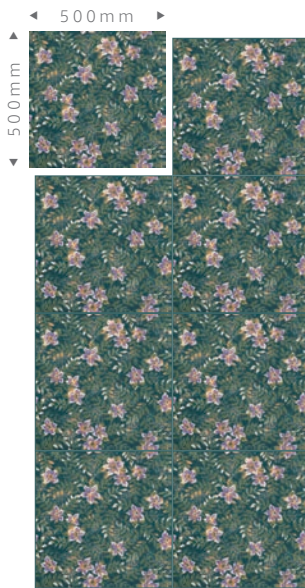
Calm-colored leaf patterns
feel elegant and refined.



EXC2558F

FLEUR

EXC2559F



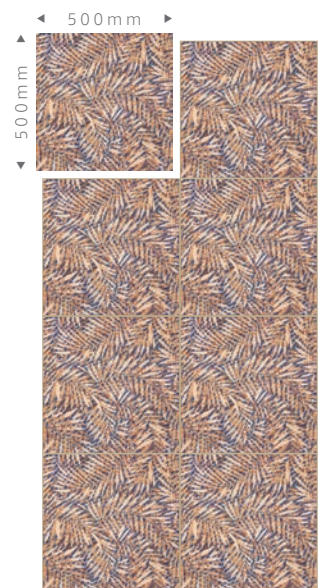
EXC2559F



EXC2560F

FERN

EXC2560F



Simple

EXC-
1000

Textured Loop

Textured loop construction
incorporating solution dyed yarn
with EXCHROME over print.
It is also characterized by
its ability to hide dirt well.

The standard dot pattern is
a versatile design
that matches any space.



EXC1501F

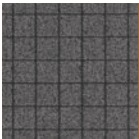


EXC1502F

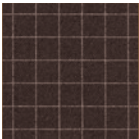
THE DOT
THE STRIPE



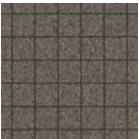
EXC1503F



EXC1504F



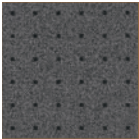
EXC1505F



EXC1506F



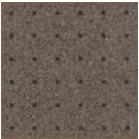
EXC1507F



EXC1508F



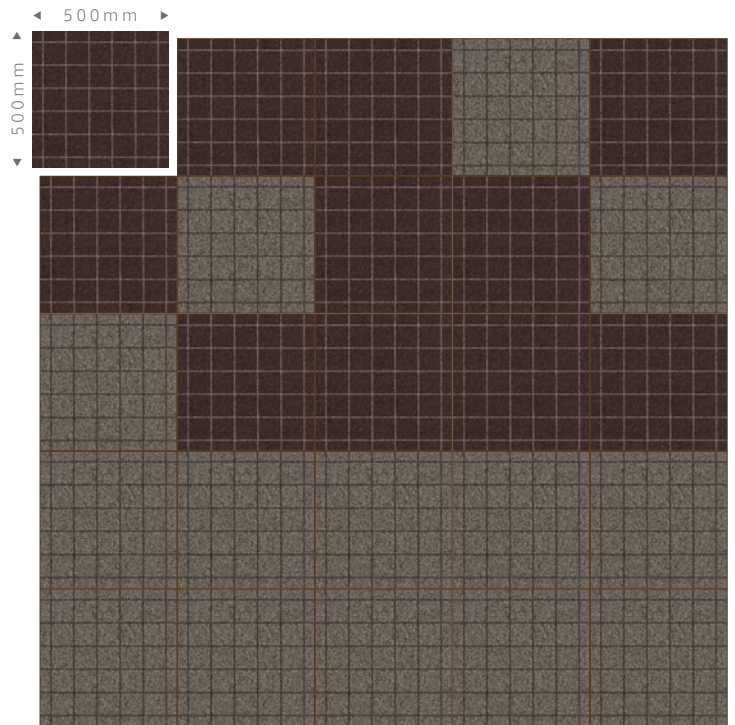
EXC1509F



EXC1510F



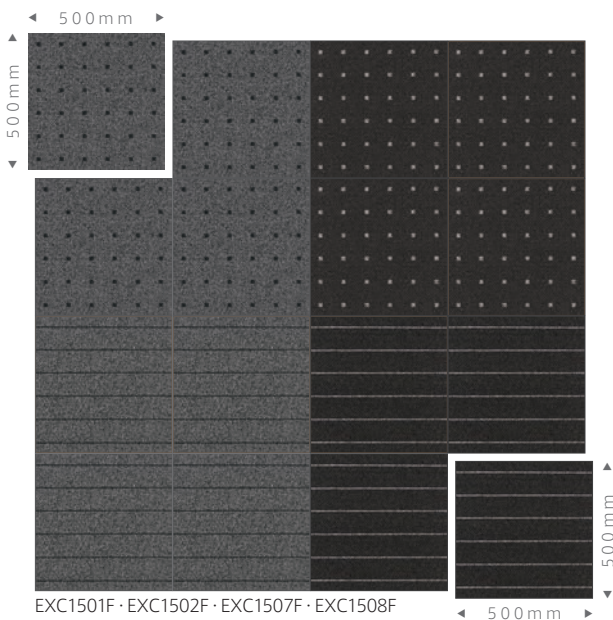
EXC1507F · EXC1508F



EXC1505F · EXC1506F



EXC1505F · EXC1506F · TTN3205



EXC1501F · EXC1502F · EXC1507F · EXC1508F

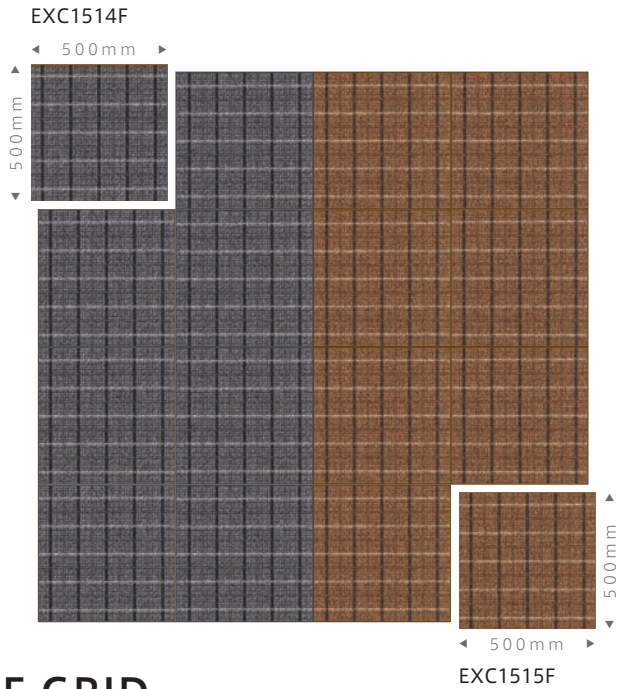


THE WAVE

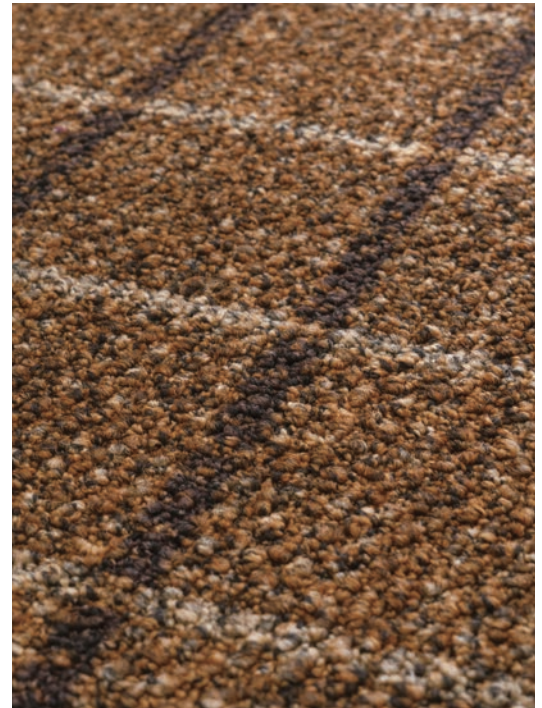


THE SWIRL





THE GRID



EX1515F

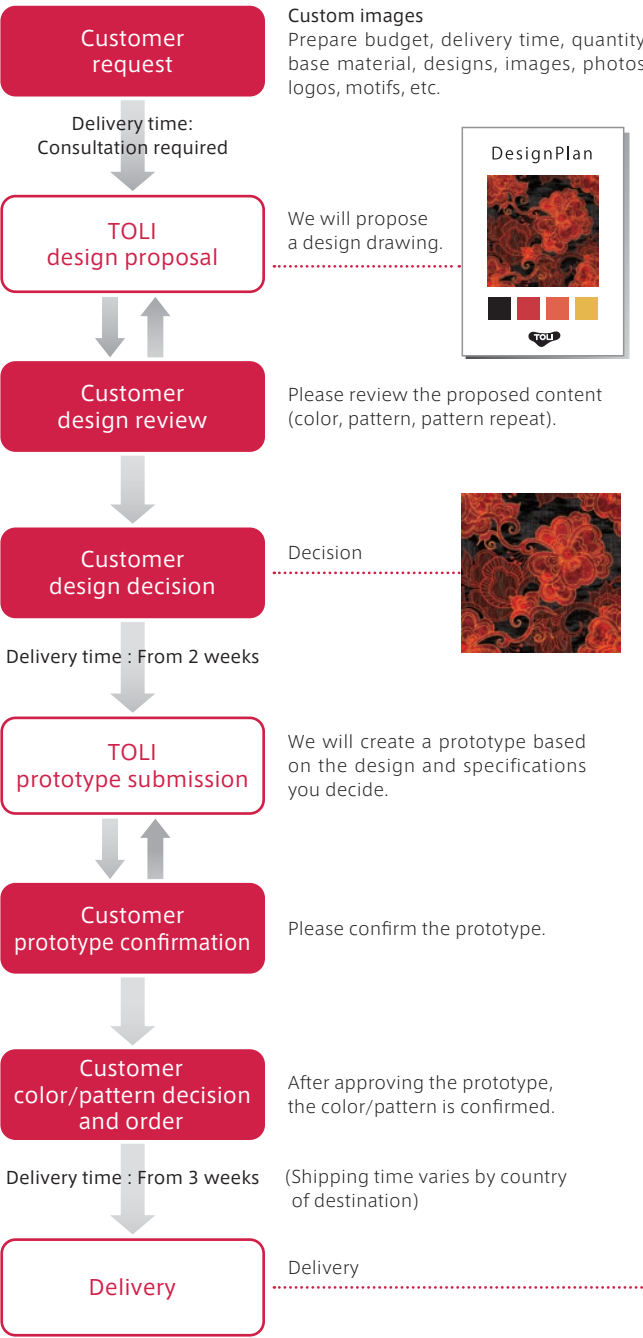
A rich, easy-to-use grid design that gives a sense of depth to the pattern.



EX1515F

Full Order System

Custom-made with your desired design on a base of three types of materials



Order Conditions		Quantity	30㎡ or more *For combined patterns, the number of sets × 30㎡ or more. Example: 4-piece combined pattern (500mm×500mm, 4 pieces make one pattern) = 120㎡ or more
	Design delivery time		Consultation required
	Prototype sample delivery time		From 2 weeks after design decision
	Mass production delivery time		From 3 weeks after order
<ul style="list-style-type: none">● Orders for quantities less than the above will require a separate quotation.● Delivery time may vary depending on quantity and timing. Please contact the TOLI sales office for details.● Please be sure to confirm the copyright of the designs you provided.			



Function Introduction

Excellent functionality suitable for various spaces



Stain Resistance

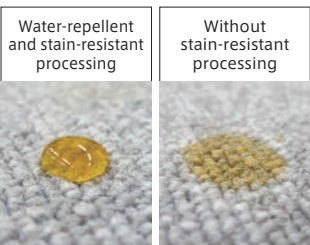
Water-repellent and stain-resistant processing

EXCHROME is treated with a water-repellent and stain-resistant process, making it difficult for stains to adhere and maintaining its appearance over a long period. It repels water, and if wiped off immediately, it does not become a stain.

Note: Hollow fibers and other stain-resistant fibers do not repel stains themselves but make stains less noticeable.
TOLI prevents stains by applying a water-repellent process.

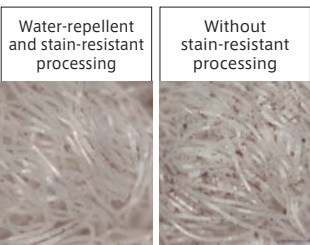
■Results of water repellency tests

Water-repellent and stain-resistant treated products repel water and do not absorb it immediately.



■Observation with a microscope

Clear differences in the accumulation of dirt can be seen between untreated and treated products.

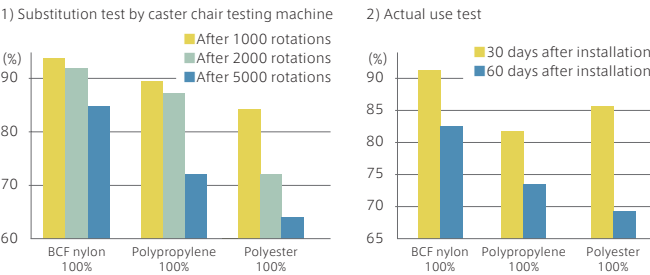


Durability

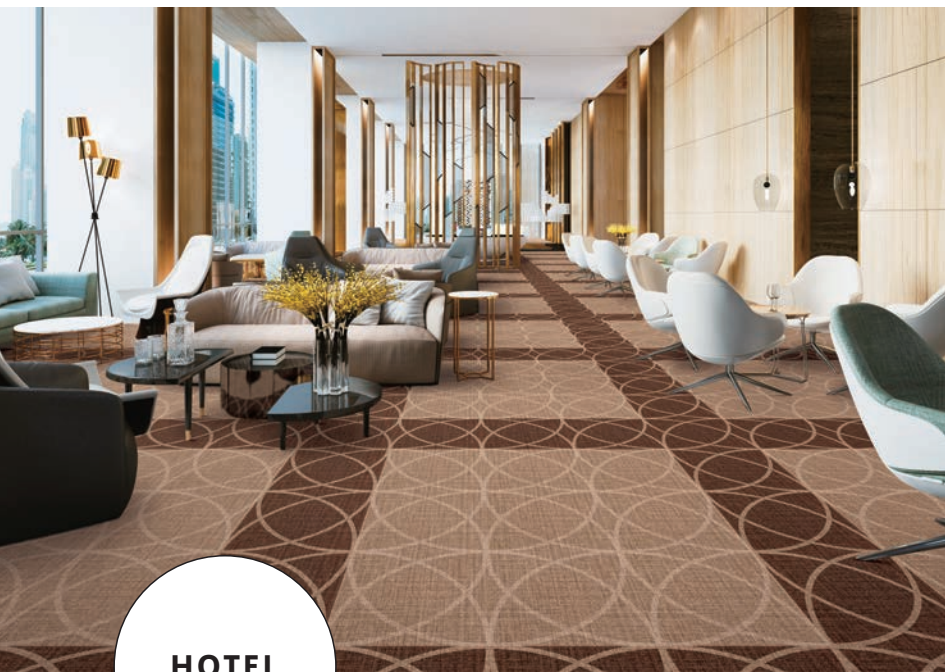
Excellent durability with BCF nylon

<Durability against wear>
Dimensional change and change rate by caster chair test results according to JIS L 4406

■Durability evaluation of BCF nylon, polypropylene, and polyester



In both tests, BCF nylon had the highest pile retention rate, about twice as durable as polypropylene.
The difference in materials becomes more apparent over time.



HOTEL



SHOP

Achieving an even more
luxurious feel underfoot

Underlay Sheet for Carpet Tile

TCPUS-4 (4mm thick)

TCPUS-6 (6mm thick)

Underlayment specifically
for tile carpets that improves
walking comfort. Ideal for
hotel rooms and corridors.
Achieves a more luxurious feel
and a quieter environment.



TCPUS-6

- Type:
Tile carpet underlay sheet
- Overall Thickness:
4 mm (0.157") · 6mm (0.236")
- Normal Dimension:
3' Wide x 66' Long Roll (950mm x 20m)



Eco Mark Certificate
Toli Corporation

Specifications List



Composition	
Pile	100% BCF Nylon
Backing	PVC and Glass Fiber
Specifications	
Pile Height	7mm(0.275")/3mm(0.120")
	Cut & Loop
Overall Thickness	9.5mm(0.374")
Yarn weight	32.5 (oz/sq.yd)
Dimensions	19.7" x 19.7" (500mm x 500mm)
Density	1/10 Gauge 12.0 Stitch/in
Packing	12pcs/Carton(3.57SY)

Flame Resistance/
Flame Resistance Test Number E2120080
Critical Radiant Flux/
Class 2 Average CRF 0.22/cm2 or higher (ASTM E648)
Smoke Density/
Less than 450(ASTM E662)
Antistatic/
Human Body Voltage Less Than 1.0kV
(JIS L 1021-16, at 23 degrees centigrade, 25%RH)
Stain Resistance/
Water-Repellent Stain Resistance Processing



Order Conditions

- Condition: 30㎡ or more per product number
- Delivery Time: From 3 weeks after order
- * Production time may vary depending on order quantity.
- * Orders less than 30㎡ will require a separate quotation.

Caution

- Cut pile may appear cloudy due to the partial irregularity of the pile direction. This phenomenon is a characteristic of cut pile and is not a quality defect.
- Standard installation is continuous laying.



Composition	
Pile	100% BCF Nylon
Backing	PVC and Glass Fiber
Specifications	
Pile Height	6mm(0.236")
	Cut Pile
Overall Thickness	9mm(0.354")
Yarn weight	30.0 (oz/sq.yd)
Dimensions	19.7" x 19.7" (500mm x 500mm)
Density	1/10 Gauge 13.5 Stitch/in
Packing	16pcs/Carton(4.77SY)

Flame Resistance/
Flame Resistance Test Number E2120080
Critical Radiant Flux/
Class 1 Average CRF 0.22/cm2 or higher (ASTM E648)
Smoke Density/
Less than 450(ASTM E662)
Antistatic/
Human Body Voltage Less Than 1.0kV
(JIS L 1021-16, at 23 degrees centigrade, 25%RH)
Stain Resistance/
Water-Repellent Stain Resistance Processing



Composition	
Pile	100% BCF Nylon
Backing	PVC and Glass Fiber
Specifications	
Pile Height	5.5mm(0.216")/3mm(0.118")
	Textured Loop
Overall Thickness	7mm(0.275")
Yarn weight	20.0 (oz/sq.yd)
Dimensions	19.7" x 19.7" (500mm x 500mm)
Density	1/10 Gauge 10.5 Stitch/in
Packing	16pcs/Carton(4.77SY)

Flame Resistance/
Flame Resistance Test Number E2120080
Critical Radiant Flux/
Class 1 Average CRF 0.22/cm2 or higher (ASTM E648)
Smoke Density/
Less than 450(ASTM E662)
Antistatic/
Human Body Voltage Less Than 1.0kV
(JIS L 1021-16, at 23 degrees centigrade, 25%RH)
Stain Resistance/
Water-Repellent Stain Resistance Processing



Green Label Plus Mark

GREEN LABEL PLUS is a certification system set by the Carpet and Rug Institute (CRI) in the United States, which certifies the indoor air quality compliance of carpet products. All EXCHROME products are GREEN LABEL PLUS certified. Acquiring this certification contributes to earning LEED Points.

* Abbreviation for The Carpet and Rug Institute, an internationally recognized authority, with 95% of manufacturers in the U.S. as members.





TOLI Ai Simulator Image Fit

Easy Interior Simulation by Shooting and Selecting!

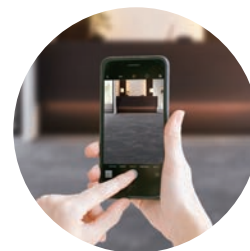
TOLI Ai Simulator, Image Fit is a simulation system that can easily create installation image by synthesizing TOLI interior finishing material into your design space.

It's also compatible with room image you shot with your smartphone, etc., so please enjoy combinations of various product images into your own room image.



For any space design

Photos shot by smartphones can be used. Image Fit will help you visualise the design.



Authentic image in high quality

Room images are created with an appropriate scale. You can also choose the installation method provided.



You can use
Image Fit from
this QR code.



Quick and easy simulation

Just choose the space and product for simulation, and option of installing direction, then the synthesized image will come out right away. If you have an internet connection, you can easily use it anytime.

Please contact TOLI office for further Image Fit assistance.

Functional Marks



Flame Resistance Mark

A unified mark established by the Japan Interior Association (NIF). It passes the flame resistance test based on the Fire Service Act.



Antistatic Mark

A unified mark established by the Japan Interior Association (NIF). It has antistatic performance that meets NIF standards.



Stain Resistance Mark

An indicator of the product's stain resistance. It is resistant to dirt and easy to clean during maintenance. Daily maintenance is most effective for maintaining appearance. Please take care of maintenance.



Soft Spikes OK

Suitable for areas where walking with soft spikes is common, such as golf courses.



Commercial 4

Suitable for high-traffic areas such as airports, department stores, shops, offices, entrance halls, and lobbies, as well as areas frequently accessed by heavy equipment.



Eco-friendly Product Mark

Products certified by TOLI as contributing to reducing environmental impact.

F☆☆☆☆ Mark

A unified mark established by the Council for Evaluation of Performance of Interior Fabrics based on voluntary standards for VOC (formaldehyde) emissions.

F☆☆☆☆ is the highest grade.

Notes on Selection

- On light-colored carpets, stain becomes more conspicuous. Care should be taken to the color when selecting the carpet.
- Please avoid use in locations where moisture may be rising constantly from subfloor. Such installation may eventually cause adhesion failure or odor emission.
- The color and pattern of the printed photo can be different from the actual product.
- Catalog photos include synthesized image photos and CG's.

Precautions for maintenance and use

! Perform daily maintenance using a vacuum cleaner according to the traffic condition, to maintain the aesthetic appearance and prevent dust accumulation.
In commercial floors, we recommend periodic intensive maintenance according to the traffic condition in addition to daily maintenance.

- Please pay attention not to damage the pile when using a vacuum cleaner with a brush attachment.
- When dirt adheres to the product, wipe it off immediately with care not to spread the dirt. Dirt will be difficult to remove over time. Some contaminants cannot be removed.
- When removing stains, stain remover, or neutral detergent, etc. should be used depending on the stain kind. Incorrect selection may lead to discoloration, etc.
- Chemicals, detergents with strong action, bleaching agents, etc., may cause discoloration or deterioration. Do not spill directly on floorings.
- Rubber products such as furniture leg rubber, rubber mats, paints, preservatives, insect repellents, etc. can contaminate and cause discoloration. Please avoid direct contact with these.
- There is a possibility of discoloration depending on environmental conditions such as direct sunlight. Use curtains, blinds, etc. to shade the floorings.
- Ventilation is recommended to eliminate any initial material odor.
- Use of proper chair/furniture protectors is recommended to avoid pile crushing from concentrated static loads.

TOLI Corporation- Global Department

2-10-4 Higashi-Shinbashi,
Minato-ku, Tokyo,
105-0021 Japan
Phone: +81-3-5403-2078
Fax: +81-3-5472-6307
<https://toli-overseas.com>
E-mail: toli_contact@toli.co.jp

TOLI Corporation Singapore Branch

1 North Bridge Road, #21-10,
High Street Centre,
179094, Singapore
Phone: +65-3138-5052
Fax: +65-6491-5234
<https://toli-overseas.com>

TOLI (SHANGHAI) Corporation

Room 314, UYAO55 Building 1,
No.55 Yuyao Rd., Jingan, Shanghai
200040 China
Phone: +86-21-6071-0688
Fax: +86-21-6071-0560
<http://www.tolish.com.cn>

TOLI North America Corporation

9247 Research Drive Irvine,
CA 92618, U.S.A.
Phone: 910-999-TOLI
<https://www.toli.com>
E-mail: info@toli-na.com

